

Create NSW

Stolen Generations Keeping Places – Keller House

Public Art Expression of Interest

13/03/2026



Contents

- 1 The Project 5**
- 2 Background 5**
- 3 Objectives 5**
- 4 Opportunity 5**
- 5 Budget & Artists Fee 6**
- 6 Public Arts Locations 8**
- 7 Reflection Point Canopy 9**
 - Description 9
 - Dimensions 9
 - Images 9
- 8 Reflection Point 11**
 - Description 11
 - Dimensions & Materials 11
 - Images 12
- 9 Building Awning 14**
 - Description 14
 - Dimensions & Materials 14
 - Images 14
- 10 Bin Enclosure 16**
 - Description 16
 - Dimensions & Materials 16
 - Images 16
- 11 Playground 18**
 - Description 18
- 12 Expression of Interest Process 20**
 - Eligibility 20
 - Two Staged EOI Process 20
 - Program Dates 21
 - Selection Panel 22
 - Stage 1 22
 - Selection Panel 24
 - Stage 2 24
 - 1. Cultural Integrity & Truth-Telling 24
 - 2. Healing and Cultural Safety 24

3.	Representation of the Stolen Generations.....	24
4.	Artistic Strength and Clarity of Vision.....	24
	Process.....	24
13	Indigenous Cultural and Intellectual Property.....	25
14	Contact Information.....	25

1

Keller House Overview

1 The Project

Create NSW is seeking Expressions of Interest for the development of public art as part of the restoration of Keller House, a place of remembrance for Stolen Generations Survivors from NSW and ACT.

Embedding high-quality public art into the redevelopment of the site has the potential to honour the resilience and stories of Survivors, creating a powerful visual narrative that acknowledges the past while fostering hope for the future. First Nations voices and perspectives explored through public art can transform Keller House into a place of cultural strength and emotional restoration where art becomes a medium for remembrance, connection, and healing.

2 Background

Keller House, a heritage-listed building within the Parramatta North Cultural Precinct, is undergoing a sensitive restoration to preserve its architectural significance while adapting it for contemporary use as a Keeping Place and living museum. The project includes essential upgrades to meet NCC and accessibility standards, along with carefully considered modifications to create culturally appropriate spaces that support Stolen Generations Survivors.

The restored Keller House and its surrounding landscape will provide a culturally safe environment for truth-telling, healing, and the sharing of Survivors' histories. It will also accommodate administrative offices that assist Survivors and support the ongoing work of the Keeping Place.

To coincide with the reopening of Keller House, Survivors in partnership with Aboriginal Affairs NSW and Create NSW have identified opportunities for First Nations artists to develop artworks for installation across five publicly accessible areas of the Keeping Place. These works will serve as powerful expressions of remembrance, connection, and healing for generations to come.

Artists are invited to contribute to this important initiative and help shape a place of remembrance, cultural resilience, and ongoing connection.

3 Objectives

The Stolen Generations Keeping Places project at Keller House has identified opportunities to enhance the visitor experience through the inclusion of five site-specific art commissions by First Nations artists. This program of curated artworks across key spaces reflects a commitment to honouring the stories of Survivors and fostering culturally safe and inclusive environments.

By championing Aboriginal perspectives and practices, this initiative encourages meaningful cultural learning and reflection. It creates opportunities for all visitors to engage deeply not only gaining knowledge but also considering the ongoing impact of the Stolen Generations and the importance of truth-telling and healing. Engaging First Nations artists ensures these works carry authenticity, cultural integrity, and the power to inspire connection and positive change.

4 Opportunity

NSW & ACT First Nations artists are invited to submit proposals for five site-specific artworks responding to the spaces identified later in this document. Artists may submit one proposal per location; however, they are welcome to repeat motifs or thematic elements across locations at their discretion.

Key themes for consideration include:

- Celebration of strength and resilience
- Connection to Country and Culture
- Representation of all Stolen Generations homes within the NSW & ACT
- Revealing collective histories
- Honouring and amplifying Survivors' stories as central voices in truth-telling

These artworks will play a vital role in creating a culturally safe and reflective environment, honouring Survivors and fostering healing through truth-telling and creative expression.

5 Budget & Artists Fee

The total allocated budget for the five artworks is \$45,000 excluding GST.

This fee covers all costs associated with the work including but not limited to artist fees for design development including research, conceptualisation and refinement of the artwork; stakeholder consultation, ensuring the artist meaningfully engages with Survivors, Cultural advisors and project managers; preparation and delivery of the final digital artwork files suitable for fabrication by the Construction Head Contractor.

In addition, each shortlisted artist invited to prepare a concept proposal for the artworks will receive a design fee of \$1,500 excluding GST.

2

Public Art Locations

6 Public Art Locations

The SGKP Keller House project provides five distinct public art opportunities.

Together, these five locations create a cohesive visual and cultural narrative across the site. From the large-scale steel canopy honouring the footprint of the original dining hall, to the inclusion of motifs into functional structures and throughout the nature-based play space, each artwork has the potential to express strength, resilience, connection to Country, and the lived realities of the Stolen Generations.

Artists are invited to respond to:

1. The Reflection Point Canopy – a major sculptural element tracing the outline of the former dining hall, offering a place for remembrance and truth telling.
2. The Reflection Point – a dedicated space for stillness, listening, and acknowledgement, shaped by the guidance of Survivors.
3. The Building Awning – a functional yet symbolic entry structure that extends the visual language of the canopy throughout the site.
4. The Bin Enclosure – a discreet but integral site element offering opportunities for subtle, cohesive thematic artwork.
5. The Playground – an area of play and cultural expression, where artwork can be integrated into timber elements through carving or burning.

Together, these locations form a connected suite of artistic opportunities, each contributing to a unified storytelling experience that honours Survivors.



7 Reflection Point Canopy

Description

The new canopy has been shaped to echo the footprint of the original dining hall that once stood on this site during the era of the Stolen Generations. Though scaled down, its form traces the outline of the building where children were made to gather each day far from Country, family, and the familiar rhythms of home. By honouring the proportions of the old structure, the canopy becomes a gentle reminder of what stood here and what was endured. It holds space for truth-telling, acknowledging the past while creating a place that is now guided by community, culture, and healing. Alongside this symbolic role, the canopy has been designed to collect rainwater, directing it to the Water Collection point below.

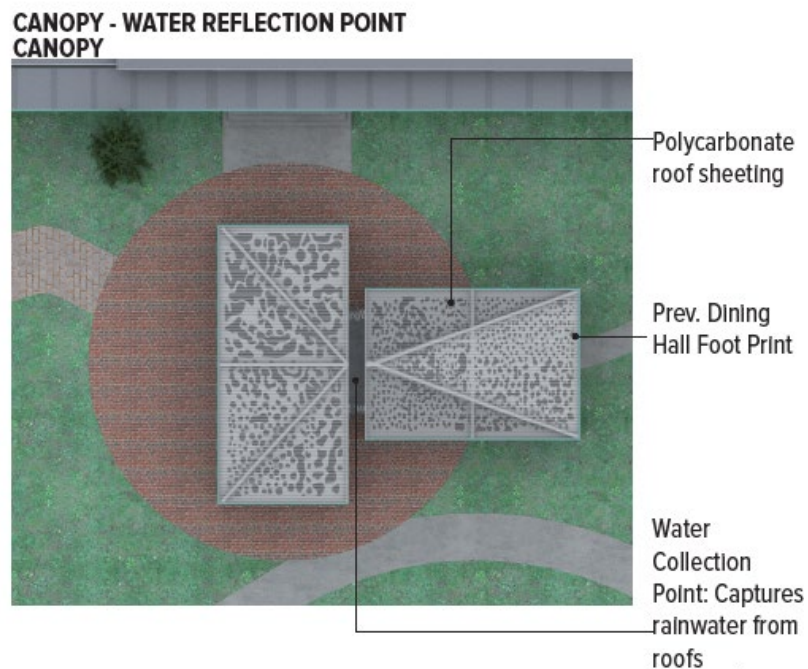
Dimensions

Canopy 1: 11.9m x 5.65m

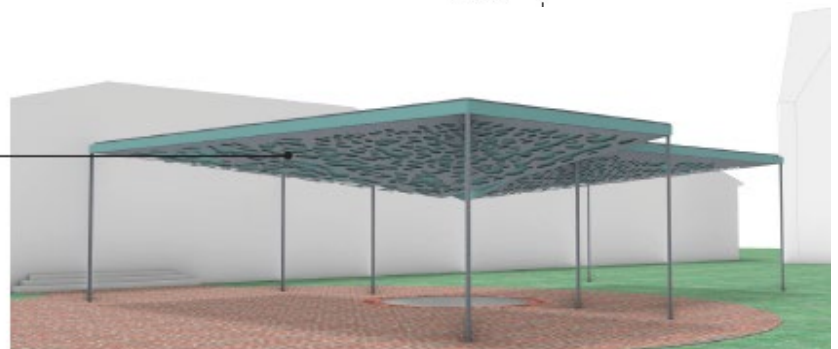
Canopy 2: 9.22m x 6.5m

Material: Laser cut steel

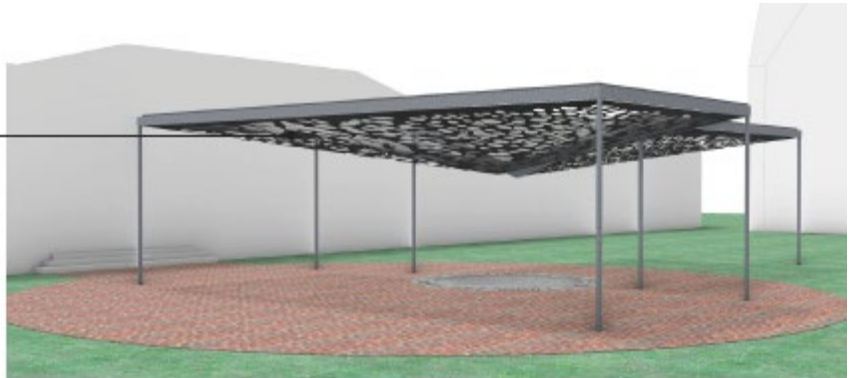
Images



Raw galvanised steel sheet



Polycarbonate Roof Sheeting allowing light to come through perforated art panel



3D VIEWS

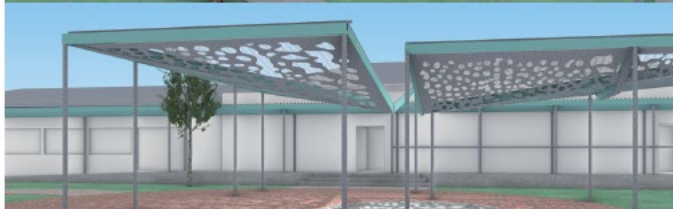
Powdercoated PFC creates floating structure effect - colour TBC by Survivor's



Lasercut Artwork mounted on soffit - high contrast material - artwork TBC by Survivor's

Minimal structure to decrease visual obstruction

S
I



PREVIOUS WORK EXAMPLES



8 Reflection Point

Description

At the heart of this work sits a simple but powerful intention:

I sit,

I reflect,

I listen.

These words guide the purpose of the reflection point an intentional space shaped by the wishes and direction of the Stolen Generations Survivors. Their leadership has been central in determining how this place should feel, what it should hold, and how people should engage with it.

Survivors asked for a space that invites truth telling and quiet acknowledgment. A place where memory is honoured, where difficult histories are not brushed aside, and where the resilience of Stolen Generations Survivors is respected with the dignity it deserves. This reflection point responds to that request.

At its centre sits a precast concrete disc, a calm and grounding form that receives and holds water. Rainfall gathers on its surface, creating a quiet moment of stillness an ever-changing mirror that symbolises memory, continuity, and the shared responsibility of carrying these truths forward. The disc's gentle fall draws water toward its edge, where it meets a custom-designed trench grate that encircles it. This grate is the primary artistic opportunity: a place where story, pattern, and cultural expression can be embedded directly into the fabric of the site. As water passes across the grate, it physically and symbolically moves through the artwork an exchange between landscape, story, and experience.

It is a space designed not just for contemplation but for responsibility. When people sit here, they are invited to listen to the stories of those taken, to the strength of families who endured, and to the ongoing impacts of removal that continue across generations. It is a space where reflection leads to understanding and understanding leads to action.

The Stolen Generations Survivors envisioned this place as part of a broader journey toward healing and truth-telling. Their guidance ensures that the reflection point stands as a respectful acknowledgment of past harms and as a commitment to a more informed and compassionate future.

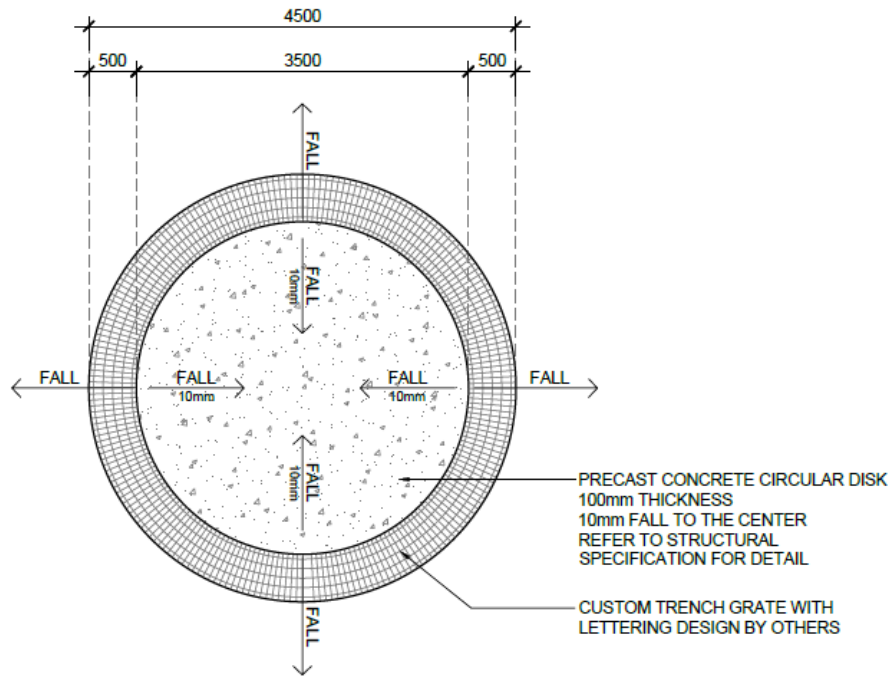
Through this EOI, the artwork aims to honour the vision of Survivors by creating a place where reflecting, listening, and seeing are not passive acts but meaningful steps toward awareness, empathy, and cultural respect.

Dimensions & Materials

Dimensions: See Landscape drawings LD-H05, Detail 01 (Screenshot below)

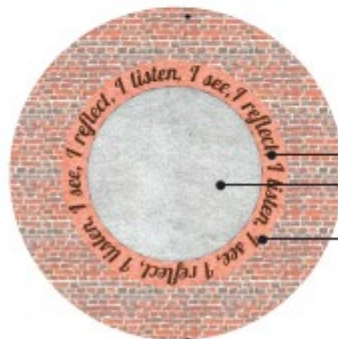
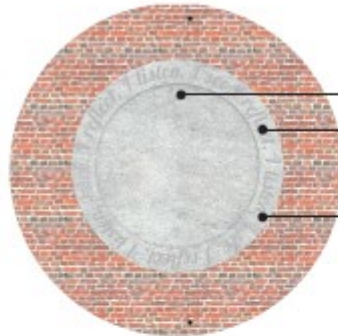
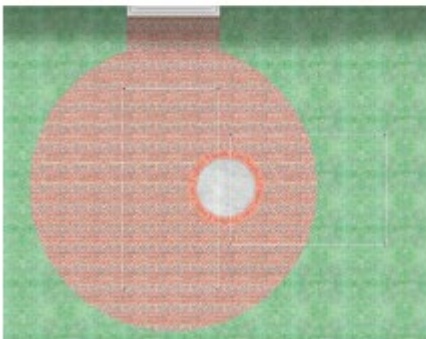
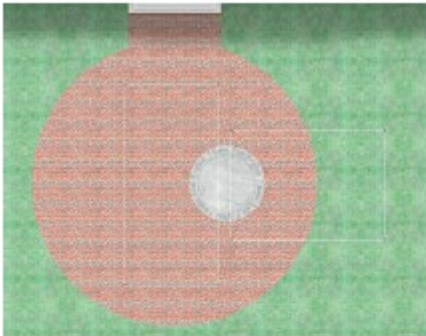
Material: Custom Steel Grate, precast concrete internal disk

Images



01 [EW] EPHEMERAL WATER COLLECTION DISK - OVERALL LAYOUT PLAN 1:50 @ A1 0 0.5 1 2.5m

WATER COLLECTION POINT



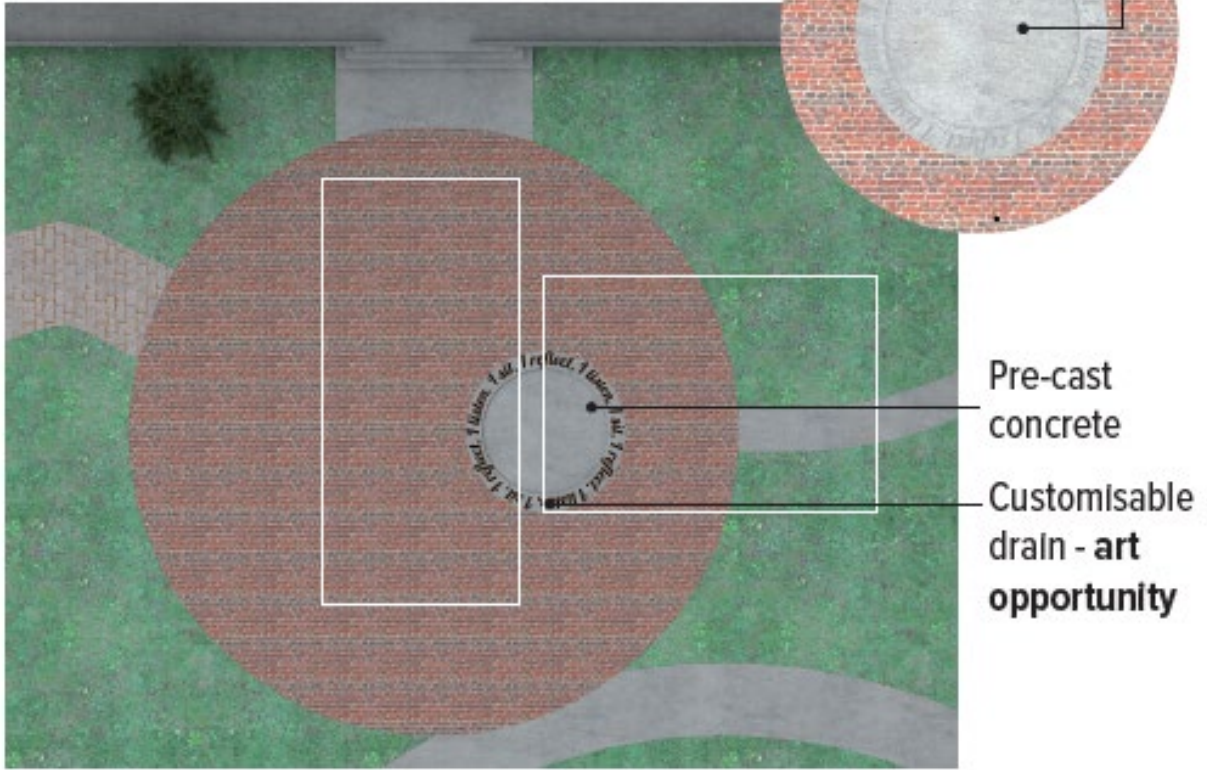
Pre-cast concrete

"I reflect, I listen, I see"
Integrated into water collection system

Pre-cast concrete

Cortan Steel

WATER COLLECTION POINT



9 Building Awning

Description

The building awning is designed to function as an extension of the canopy approach, offering both practical shelter and a clear visual identity for the site. Like the canopy, the awning provides shade, weather protection, and a welcoming threshold for visitors, ensuring comfort and safety in all seasons.

The awning structure is intended to be durable, culturally respectful, and architecturally consistent with the broader design language of the precinct. Its form supports pedestrian flow, enhances accessibility, and creates a defined entry point that invites people into the space with clarity and purpose. Importantly, the awning also introduces an opportunity to soften the presence of the existing colonial building, using form, materiality, and cultural expression to gently mediate between the historic structure and a more inclusive, contemporary identity for the site.

Dimensions & Materials

Dimensions: (Image below)

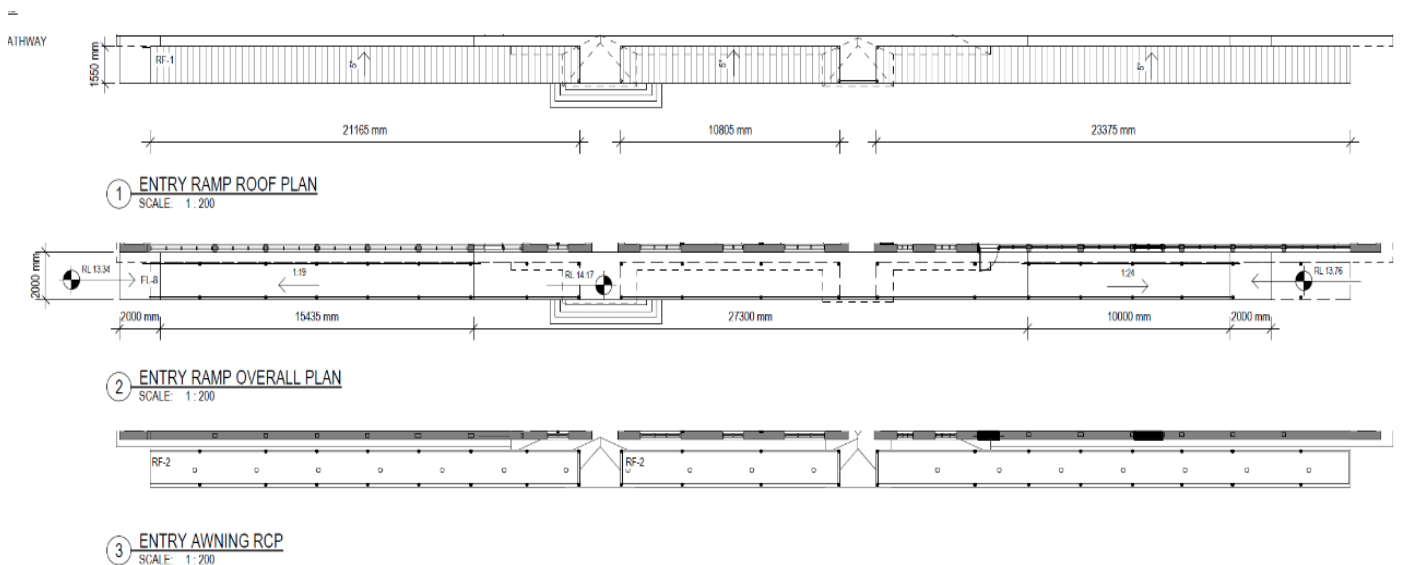
Section A - 1.5m x 21.2m

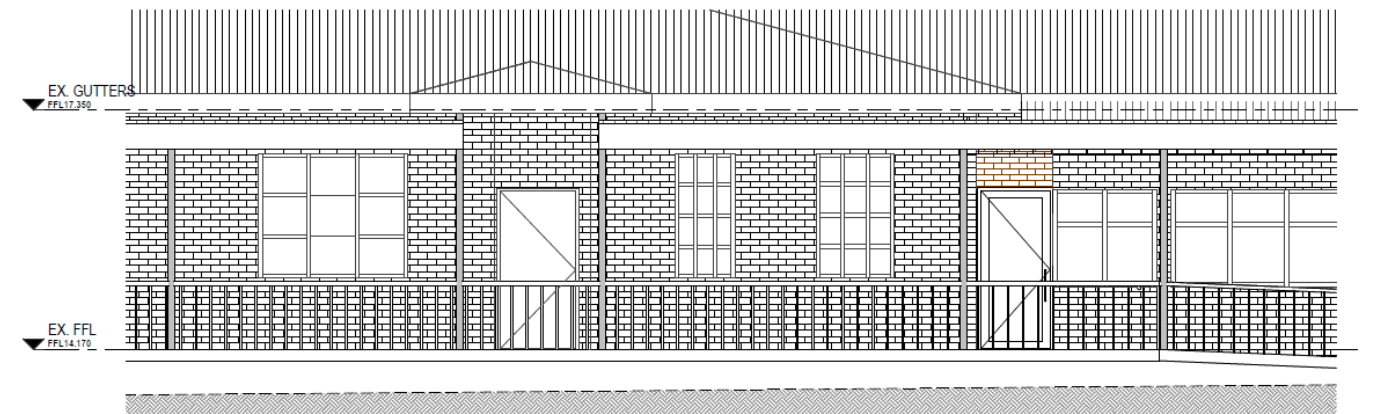
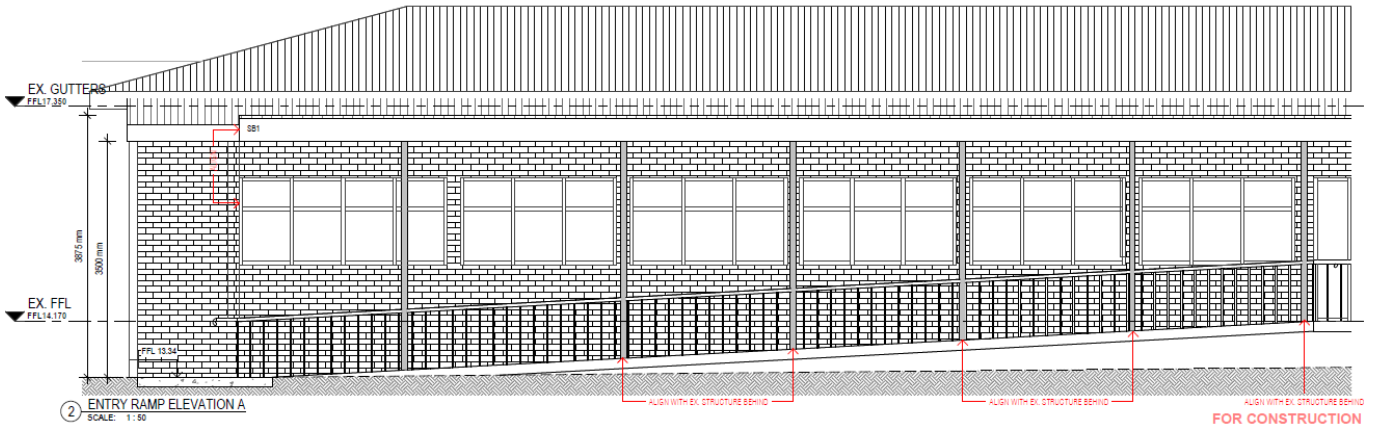
Section B - 1.5m x 10.8m

Section C - 1.5m x 23.4m

Material: Laser Cut Steel - Galvanised or powder coated specified colour

Images





10 Bin Enclosure

Description

The bin enclosure is designed as a functional but unobtrusive element that supports the overall amenity, safety, and presentation of the site. Its purpose is to securely house waste and recycling bins while maintaining a clean, orderly environment for visitors, staff, and the surrounding community.

The enclosure will be constructed using durable, low-maintenance materials that align with the broader architectural and landscape palette. Ventilation, drainage, and ease of access are key considerations, ensuring the enclosure operates efficiently and minimises odour, clutter, and visual impact.

A perforated art screen will be incorporated into the enclosure design to provide additional ventilation while contributing a visually engaging layer that softens the structure’s appearance. This screen offers opportunities for cultural expression, patterning, or site-responsive artwork. The images shown are sample images only, demonstrating the type of perforated art treatment that could be explored.

Dimensions & Materials

Dimensions: (Image below)

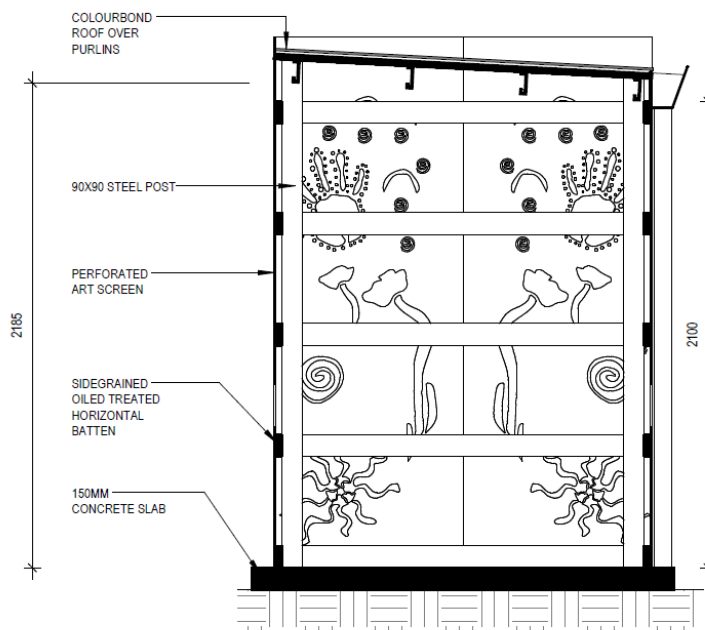
Section A - 1.5m x 21.2m

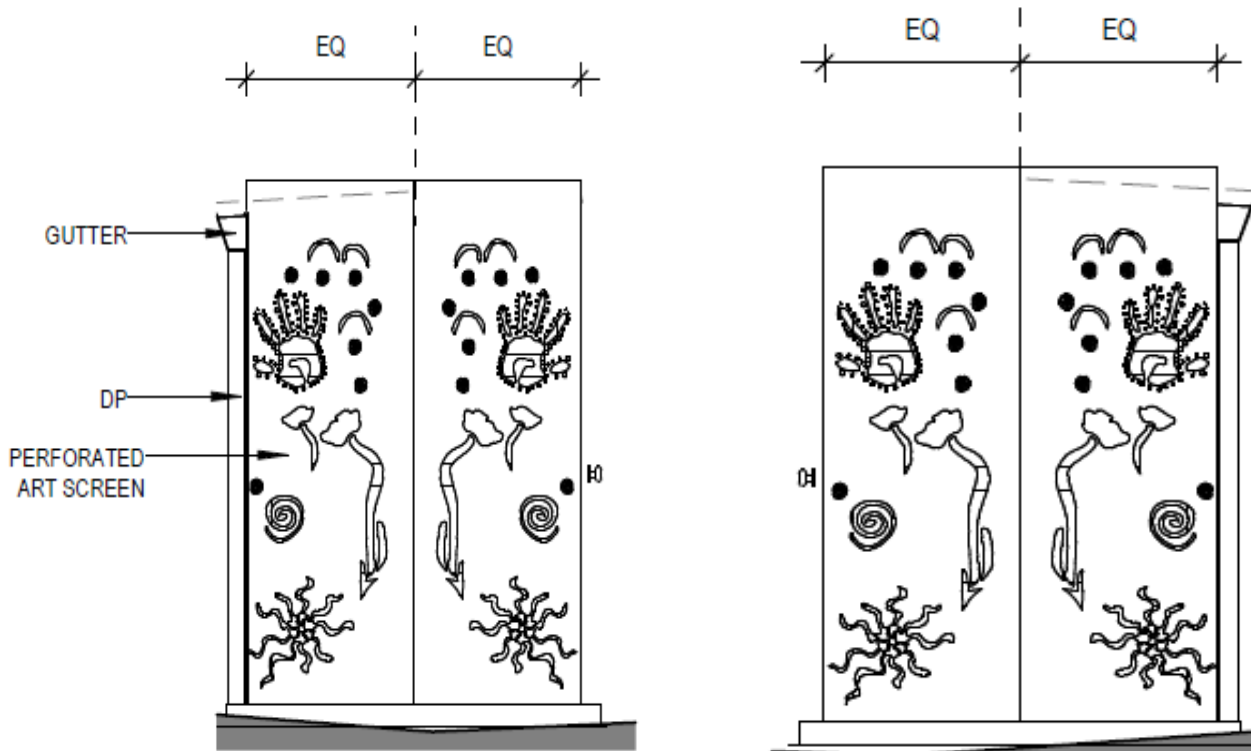
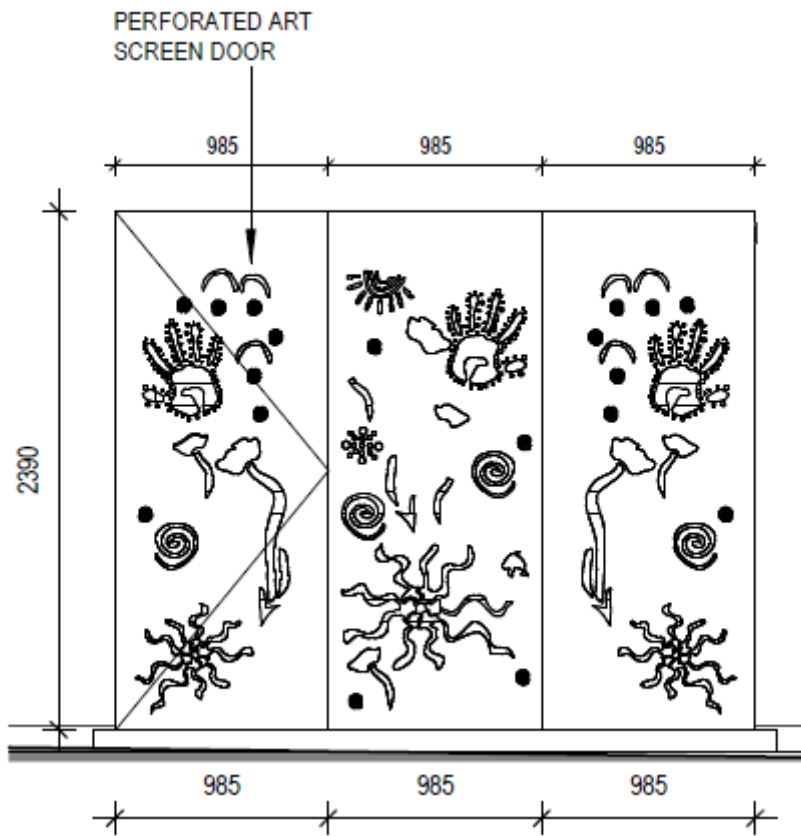
Section B - 1.5m x 10.8m

Section C - 1.5m x 23.4m

Material: Laser Cut Steel - Galvanised or powder coated specified colour

Images

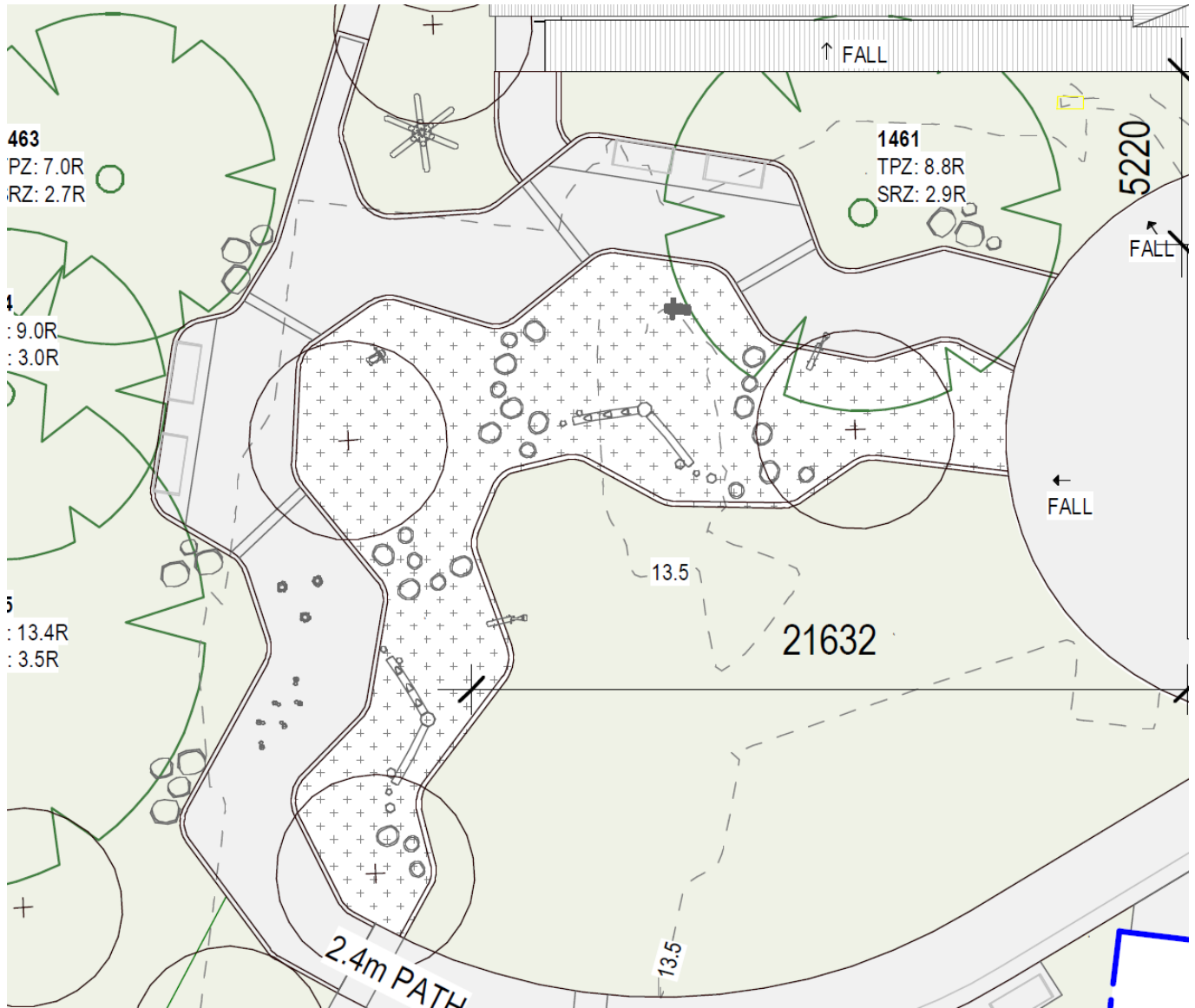




11 Playground

Description

Playground is comprised of timber balance beams, stepping stones and timber cubby. There is the opportunity to provide design work on the timber elements through carving or burning to create a cohesive design connecting the play space to the canopy and building.



3

Expression of Interest
Process

12 Expression of Interest Process

Eligibility

This EOI is coordinated by Create NSW and provides one commissioning opportunity for NSW and ACT First Nations artist.

Eligibility

- Hold a valid Australian Business Number (ABN) for a registered entity.
- Be an individual applicant.
- Identify as an Aboriginal and/or Torres Strait Islander person, with demonstrated connection to Country, culture, community, and cultural practice in NSW or ACT. Applicants may be asked to provide a short-written statement that includes:
 - Their Aboriginal and/or Torres Strait Islander identity
 - Their family lineage, Their involvement in community, such as participation in cultural events, organisations, or relationships with Elders
 - Their involvement in community, such as participation in cultural events, organisations, or relationships with Elders)
- Have maintained residency in NSW and / or the ACT for the previous 12 months and still reside there.
- Be a permanent resident of Australia.
- Have an account with an Australian financial institution.
- Be 18 years old or older.

Two Staged EOI Process

The selection process will include two stages, of which an EOI is the first.

Stage 1:

Artists are invited to make an EOI submission via Smarty grants. The EOI closes at 2pm on 2nd April 2026. The selection panel will shortlist four (4) artists to progress to Stage 2, based on the project selection criteria.

Stage 2:

Shortlisted artists will be invited to develop a concept designs for artwork locations at Keller House. Artists will be briefed on Keller House and provided with a site visit.

Based on the quality and appropriateness of the concept proposal, a successful artist will be chosen by the selection panel for each of the locations. Successful artists will be contracted to Create NSW. Shortlisted artists will be paid a fee of \$1,500 for submission of concept designs.

Create NSW reserve the right to adjust the selection process and artist selection due to unforeseen circumstances and/or changing program requirements.

Program Dates

Item	Date
EOI opens	March 2026
EOI closes	Thursday 16th April 2026
Notification of shortlisted and unsuccessful artist	April 2026
Shortlisted artists invited to develop concept design	April 2026
Site visit	May 2026
Concept designs submitted via Smarty grants	May 2026
Presentation of concept designs to panel (date TBC)	June 2026
Notification of selected artist/s and unsuccessful artists	May to June 2026
Design development, review and approvals	July - August 2026
Artwork installation	August - October 2026

Selection Panel

Stage 1

The Stage 1 selection panel will include representatives from Create NSW, along with a First Nations curator

Criteria	Specific information and evidence required
<p>Criterion 1: Demonstrated Understanding of the Project and Desired Outcomes</p>	<p>You should demonstrate this by identifying:</p> <ul style="list-style-type: none"> • A clear understanding of the aims, context, and intended outcomes of the project. • How your practice or approach aligns with the commissioning program’s objectives. • Awareness of the communities, audiences, or contexts relevant to the project. <p>Evidence Required:</p> <ul style="list-style-type: none"> • Response to questions addressing this criterion in the EOI application form (200–300 words).
<p>Criterion 2: Artistic Merit</p>	<p>You should demonstrate this by identifying:</p> <ul style="list-style-type: none"> • The quality, originality, and relevance of your past artistic work. • Previous experience delivering artworks of a similar scale, context, or complexity. • A demonstrated professional practice or exhibition history. <p>Evidence Required:</p> <ul style="list-style-type: none"> • Up to five examples of previous artworks with brief (1–2 sentence) descriptions.

<p>Criterion 3: Capacity to Deliver</p>	<p>You should demonstrate this by identifying:</p> <ul style="list-style-type: none"> • Relevant experience, skills, and capability to undertake the commission. • Your availability and ability to meet the required timeframe. • Your willingness to consult and collaborate with stakeholders. <p>Evidence Required:</p> <ul style="list-style-type: none"> • Response to question addressing this criterion in the EOI application form (200–300 words). • Confirmation of availability for project delivery. • Referees and short CV/bio.
<p>Criterion 4: Cultural Integrity & Alignment</p>	<p>You should demonstrate this by identifying:</p> <ul style="list-style-type: none"> • A commitment to culturally safe, respectful, and appropriate practice. • Understanding of relevant cultural protocols, including First Nations cultural and intellectual property (ICIP) where applicable. • Examples of ethical engagement with communities, collaborators, or knowledge-holders. <p>Evidence Required:</p> <ul style="list-style-type: none"> • Response to question addressing this criterion in the EOI application form (200–300 words). • Examples of previous artworks provided by the applicant will also be assessed against this criterion.

Selection Panel

Stage 2

These are the criteria the Stolen Generations Council Survivors will use when reviewing the four shortlisted Concept Designs. Survivors will view the presentations without the artists present. These criteria guide scoring, discussion, and the final vote to select the preferred artist.

1. Cultural Integrity & Truth-Telling

Does the proposed concept:

- Accurately and respectfully represent the histories, lived experiences and truths of the Stolen Generations?
- Uphold cultural protocols, permissions, and community expectations?
- Demonstrate authenticity, accuracy, and care in the way stories are told?

2. Healing and Cultural Safety

Does the design:

- Support healing for Survivors, families and communities?
- Show trauma-informed thinking, avoiding harm or distress?
- Offer a safe and respectful experience for all who engage with the work?

3. Representation of the Stolen Generations

Does the concept:

- Demonstrate understanding of the impacts of removal, loss, resilience, and survival?
- Reflect the diversity of Stolen Generations experiences across NSW/ACT?
- Honour the strength, identity and voices of Survivors?

4. Artistic Strength and Clarity of Vision

Does the proposal:

- Present a strong, clear, and compelling artistic vision?
- Use design, materials, and visuals that effectively communicate the concept?
- Show originality, quality, and creative depth?

Process

To be considered by the selection panel, artists must submit an EOI via the SmartyGrants application system on the Create NSW website. All supporting documentation should be provided in PDF format.

13 Indigenous Cultural and Intellectual Property

Indigenous Cultural and Intellectual Property (ICIP) is a broad term which is used to refer to the rights Aboriginal and Torres Strait Islander people have to their heritage and culture. ICIP includes knowledge, songlines, language, dance, symbols and art as well as medicines, language, bush foods, sacred sites and ecological knowledge. ICIP incorporates both tangible and intangible elements – the object and the knowledge, the artwork and the cultural practice.

The quality of commissioned artworks must be of the highest ethical and artistic standard. Consent from Traditional Owners must be sought to ensure knowledge and culture can be shared in the commissioned artworks. Distinguishing between Stolen Generations Survivors and broader First Nations collaborators respects the hierarchies of cultural knowledge.

Create NSW can support artists to connect with appropriate Traditional Owners to ensure content is able to be shared and is suitable.

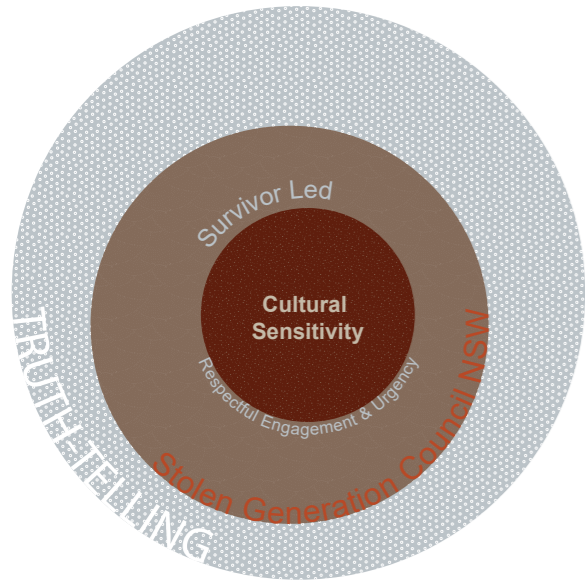
14 Contact Information

Create NSW: FirstNations@Create.nsw.gov.au or for assistance submitting applications via SmartyGrants please email arts.funding@create.nsw.gov.au

4

Appendix – Keller House
Reference Drawings

PROJECT PRINCIPLES



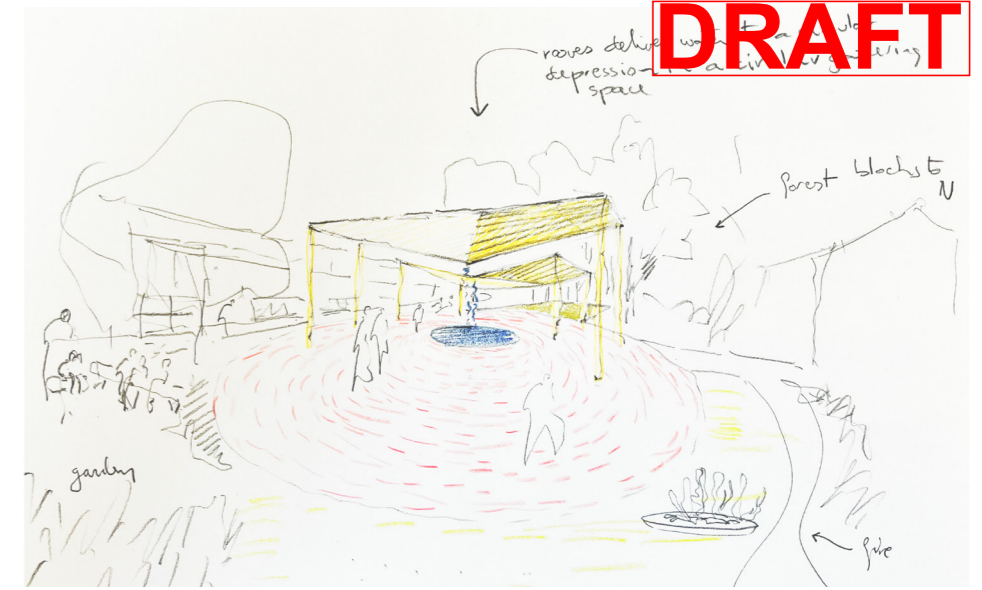
REFLECTION POINT & CANOPY

Brief - CREATNSW

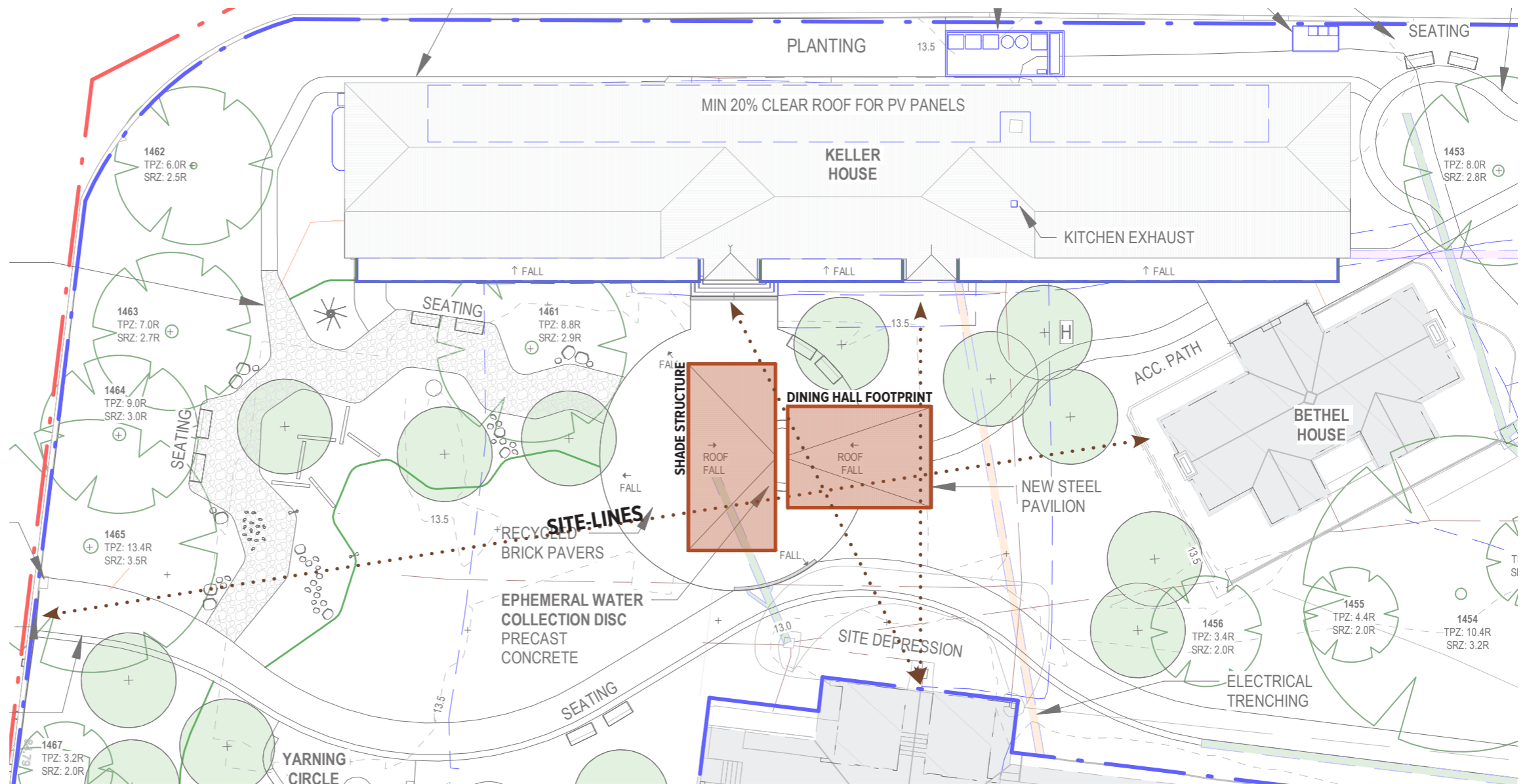
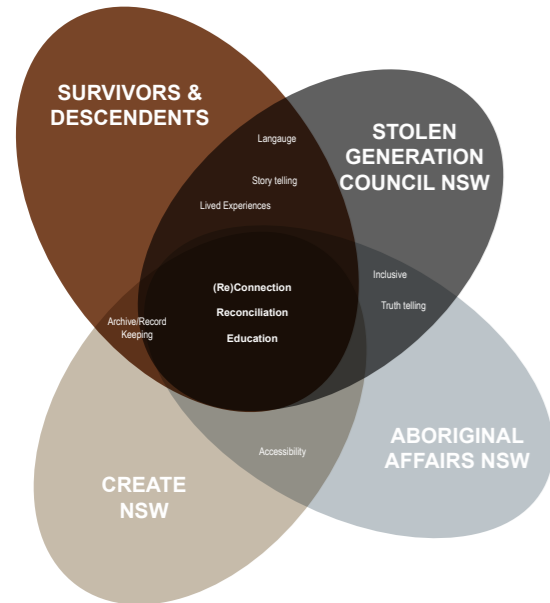
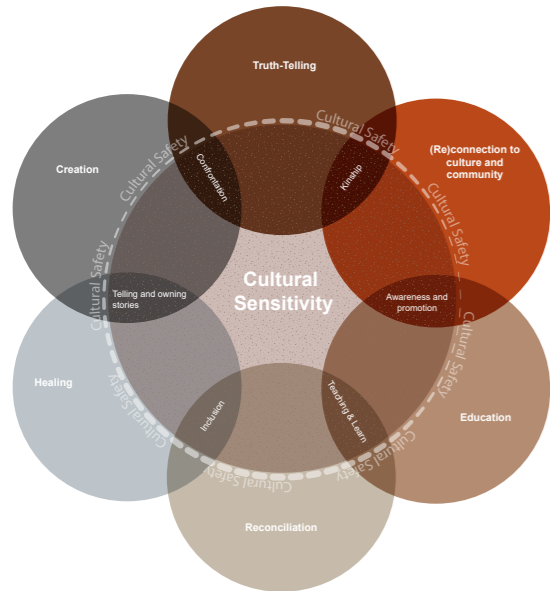
- Integrated Artwork Memorial
- Iconic Piece: original and sincere to Keller House and her history
- "I reflect, I listen, I see" - Keller House Survivor's
- Cost effective

Design Principles - KYA&JMD

- Minimise visual obstruction across site: Clear site lines from Eels Place entry to Bethel House
- Create shade - Shape of previous dining hall
- Water collection point - Water blade evaporates at centre, allows for overflow with edge drainage



CONCEPT LANDSCAPE DESIGN - REFLECTION POINT



CURRENT SITE PLAN



1:500 @ A3

JMD design

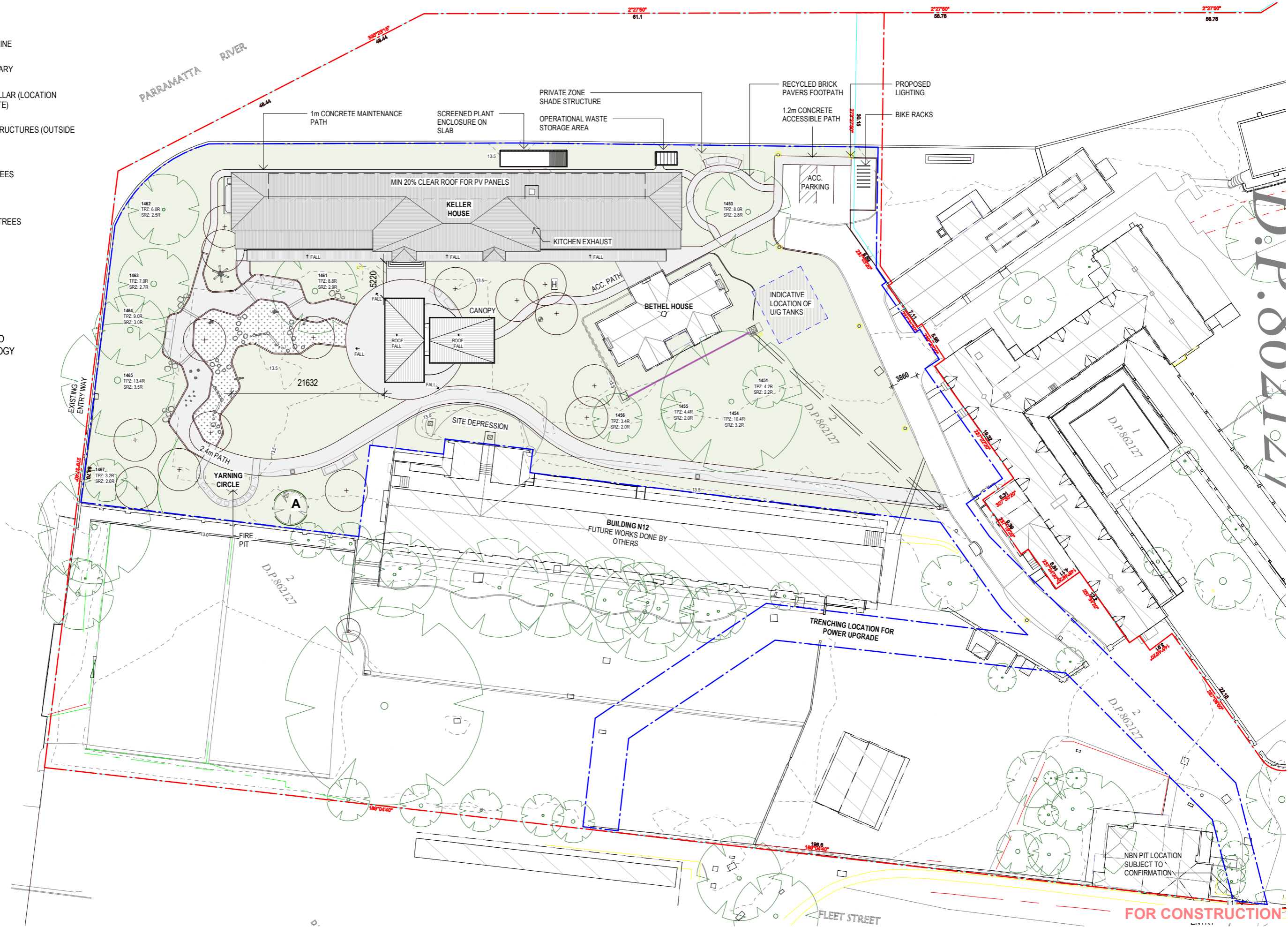
SITE LEGEND:

- - - PROPERTY LINE
- - - SITE BOUNDARY
- H HYDRANT PILLAR (LOCATION APPROXIMATE)
- EXISTING STRUCTURES (OUTSIDE SITE)
- EXISTING TREES
- PROPOSED TREES

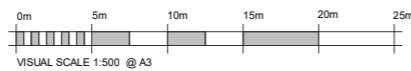
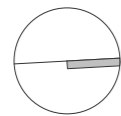
IMPORTANT NOTES:

REFER TO LANDSCAPE ARCHITECT'S DRAWINGS AND SPECIFICATIONS FOR DETAILS

INDICATIVE U/G TANK'S AREA TO BE ADDRESSED PER ARCHEOLOGY REPORT



DISCLAIMER:
Copyright in all documents and drawings prepared by KAUNITZ YEUNG ARCHITECTURE any works executed from those documents and drawings shall remain the property of, or on creation vest in KAUNITZ YEUNG ARCHITECTURE Pty Ltd.
All information illustrated on this document is to be checked and verified, in the event of discrepancies refer to architect prior to commencement of the work.
Do not scale drawings manually or electronically.



DATE
12.12.2025
11.02.2026

REV
A
B

ISSUE
TENDER
FOR CONSTRUCTION_DRAFT

CHECKED BY:
KYA_MR
KYA_MR

PROJECT :
STOLEN GENERATION KEEPING PLACES - KELLER HOUSE
1C Fleet St, North Parramatta NSW 2151

KAUNITZ YEUNG ARCHITECTURE
69 Renwick St., Redfern NSW 2016
T +61 2 9007 2098

SHEET NO.
A101

REV
B

TITLE
SITE PLAN

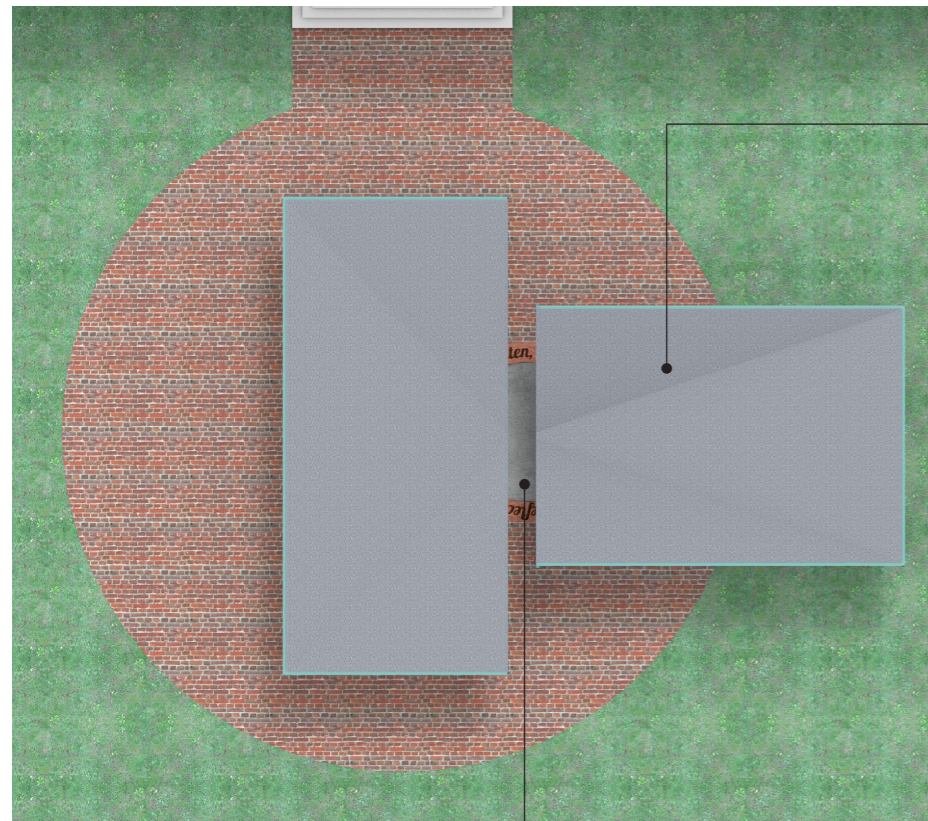
PHASE
TD

SCALE:
1 : 500

DATE:
11.02.2026

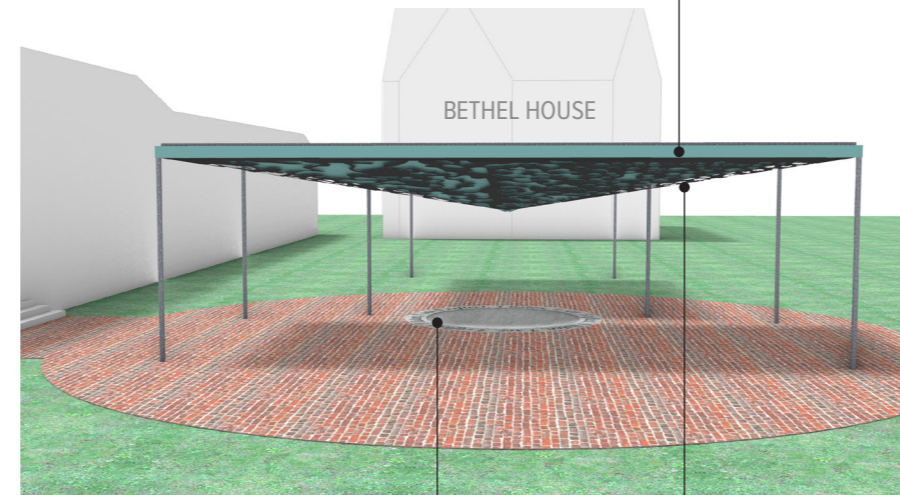
FOR CONSTRUCTION

DESIGN DEVELOPMENT

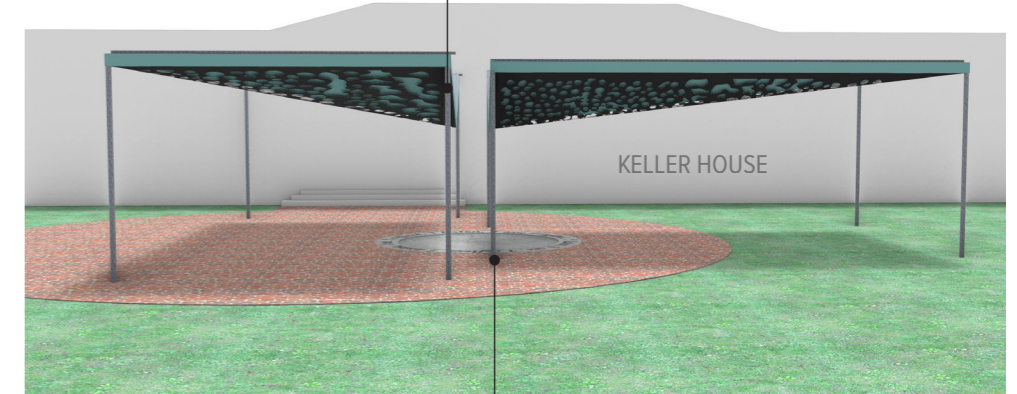


Zincalume roof sheeting ties into Keller House restoration

Powdercoated PFC creates floating structure effect - colour TBC by Survivor's



Raw galvanised steel materiality to reflect surroundings, minimise visual impact & tie into Keller House restoration

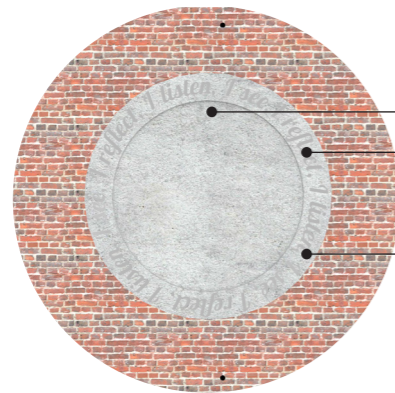
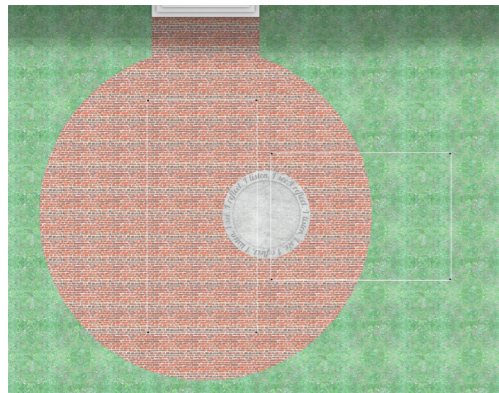


Water Collection Point:
Captures rainwater from roofs

Lasercut Artwork mounted on soffit - high contrast material

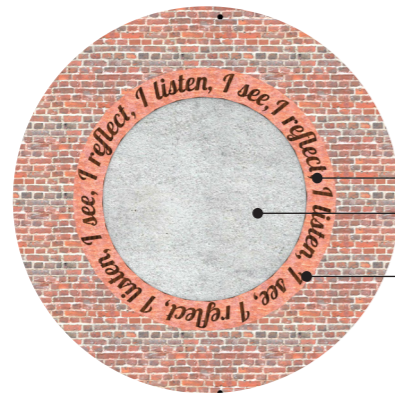
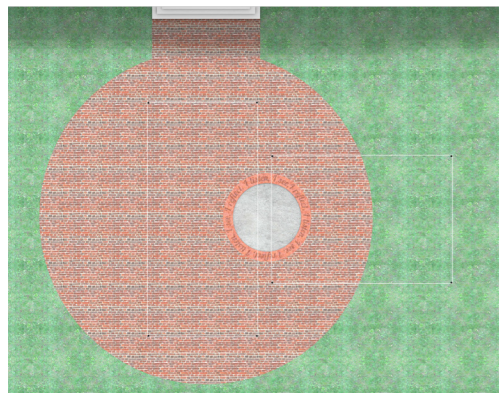
Minimal structure to decrease visual obstruction - SHS/CHS TBC

WATER COLLECTION POINT



Pre-cast concrete

"I reflect, I listen, I see" integrated into water collection system

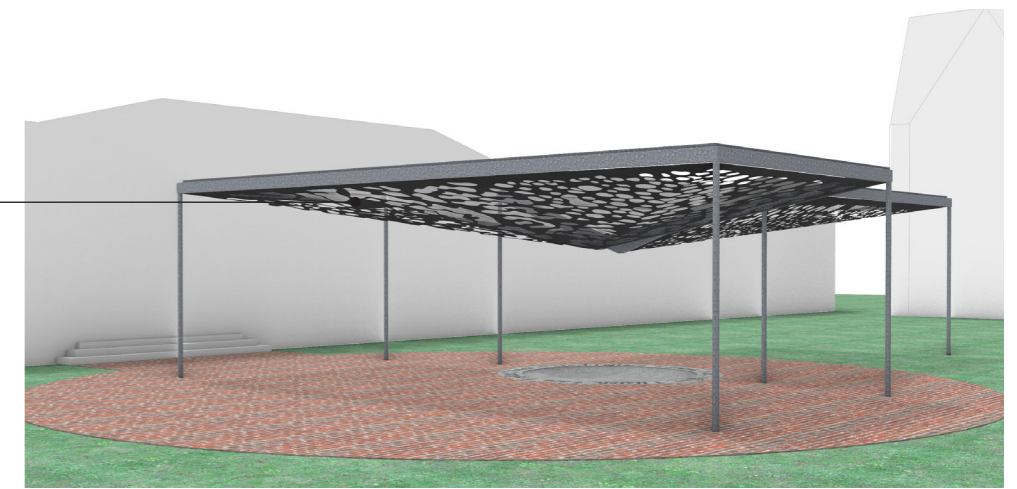


Pre-cast concrete

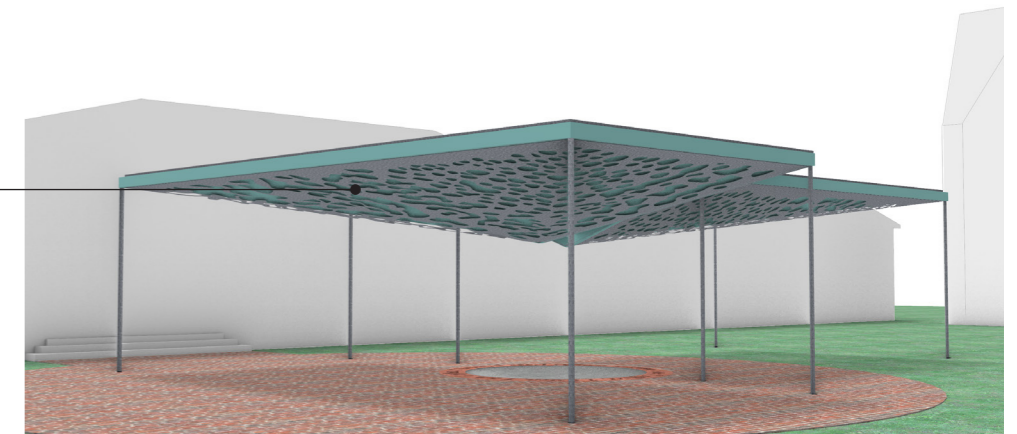
Cortan Steel

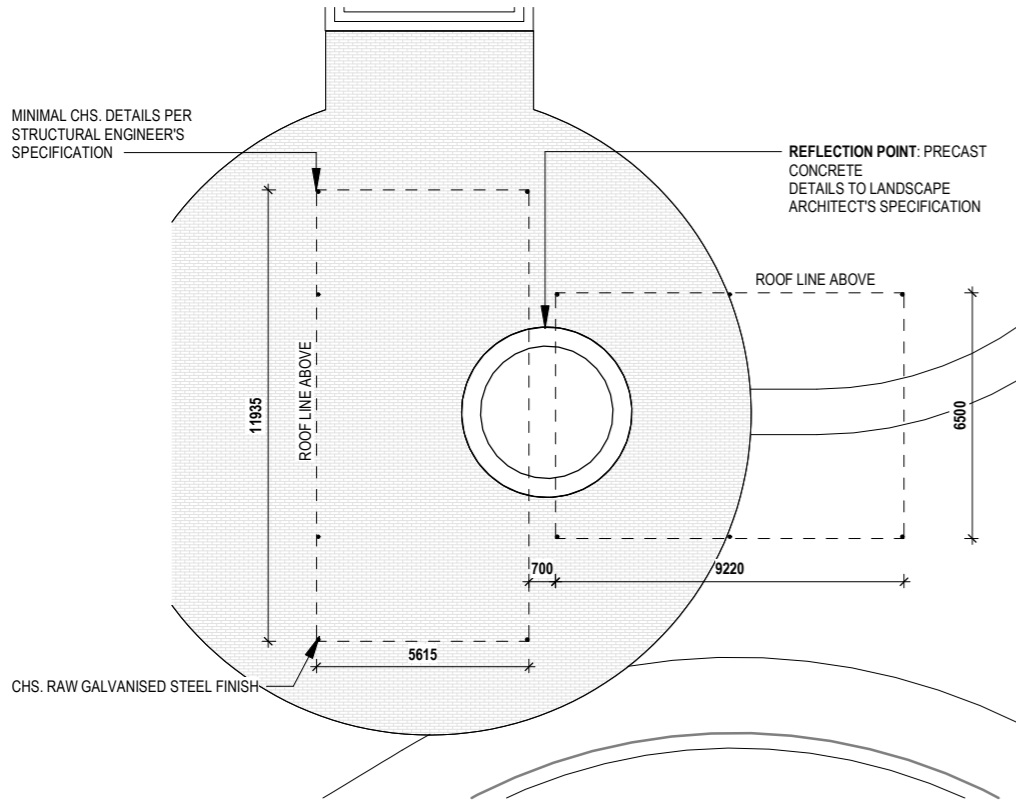
ALTERNATIVE MATERIALITY OPTIONS

Polycarbonate Roof Sheeting allowing light to come through perforated art panel

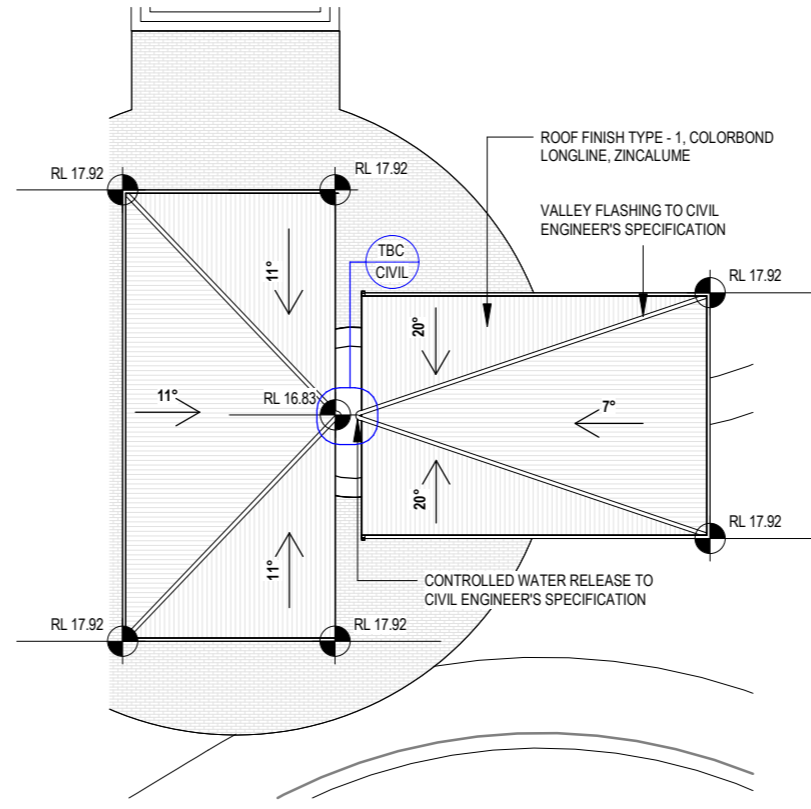


Raw galvanised steel sheet

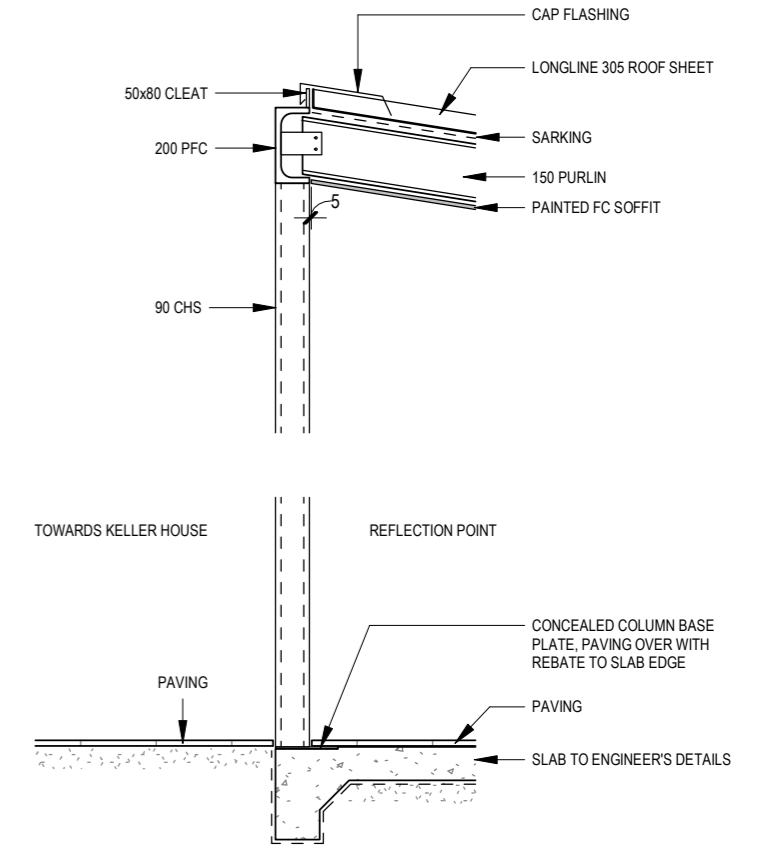




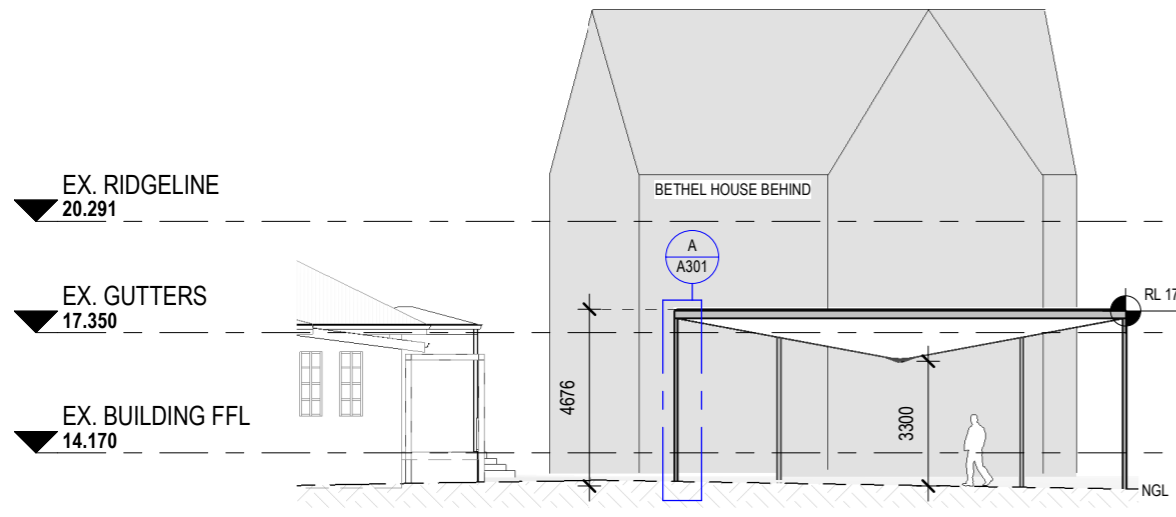
1 CANOPY FLOOR PLAN
SCALE: 1 : 200



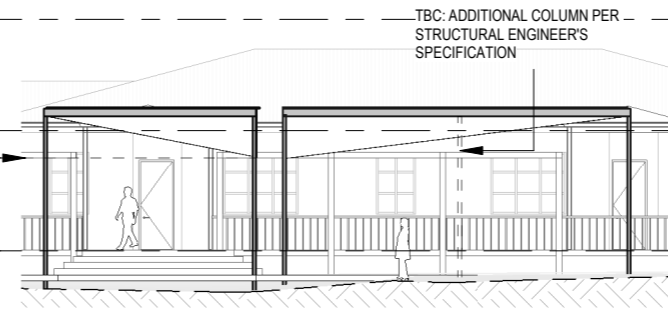
2 CANOPY ROOF PLAN
SCALE: 1 : 200



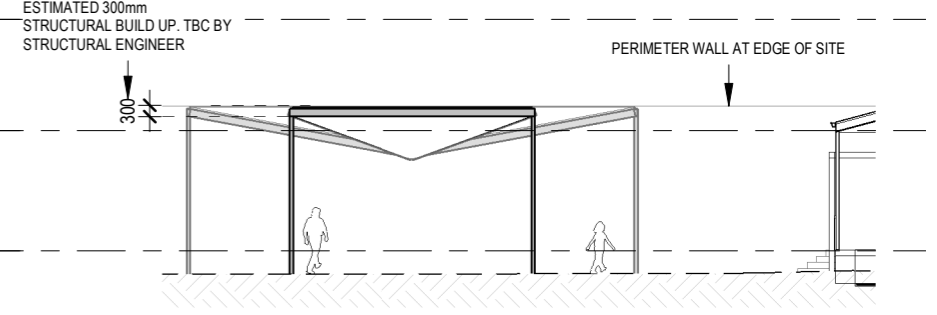
A DETAIL A
SCALE: 1 : 20



S CANOPY SOUTHERN ELEVATION
SCALE: 1 : 200



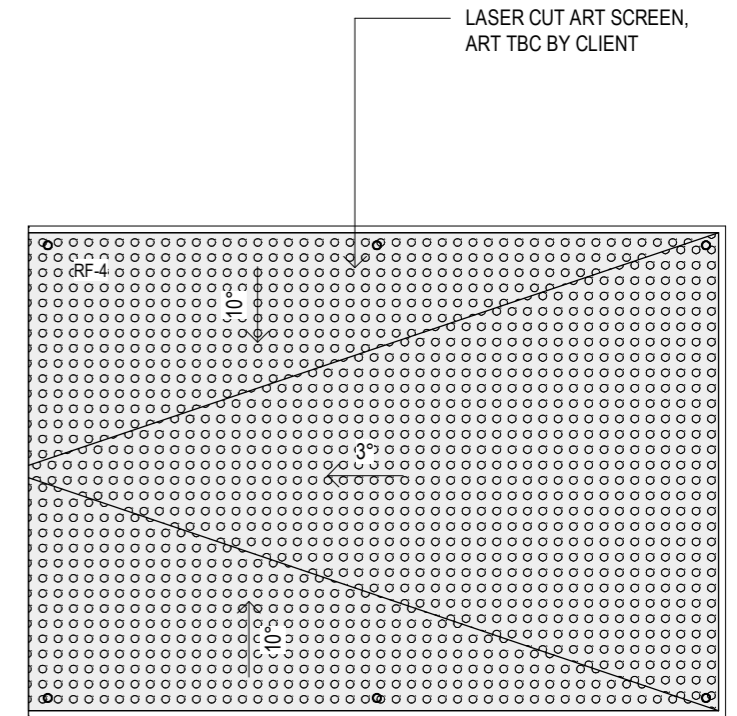
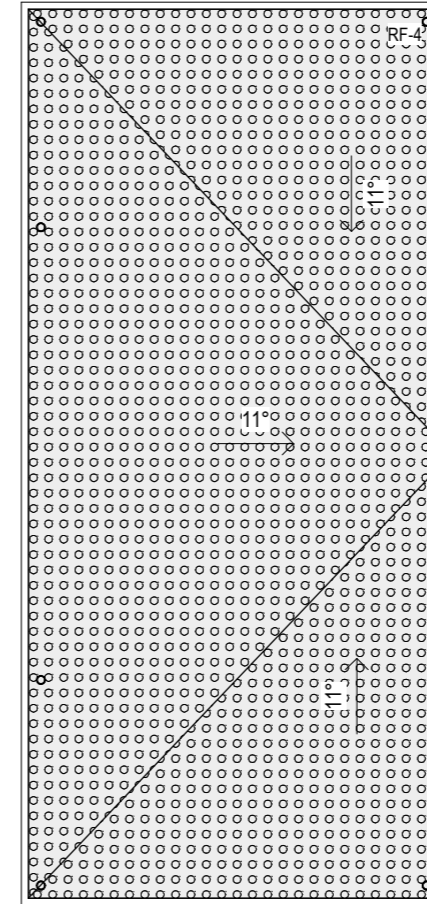
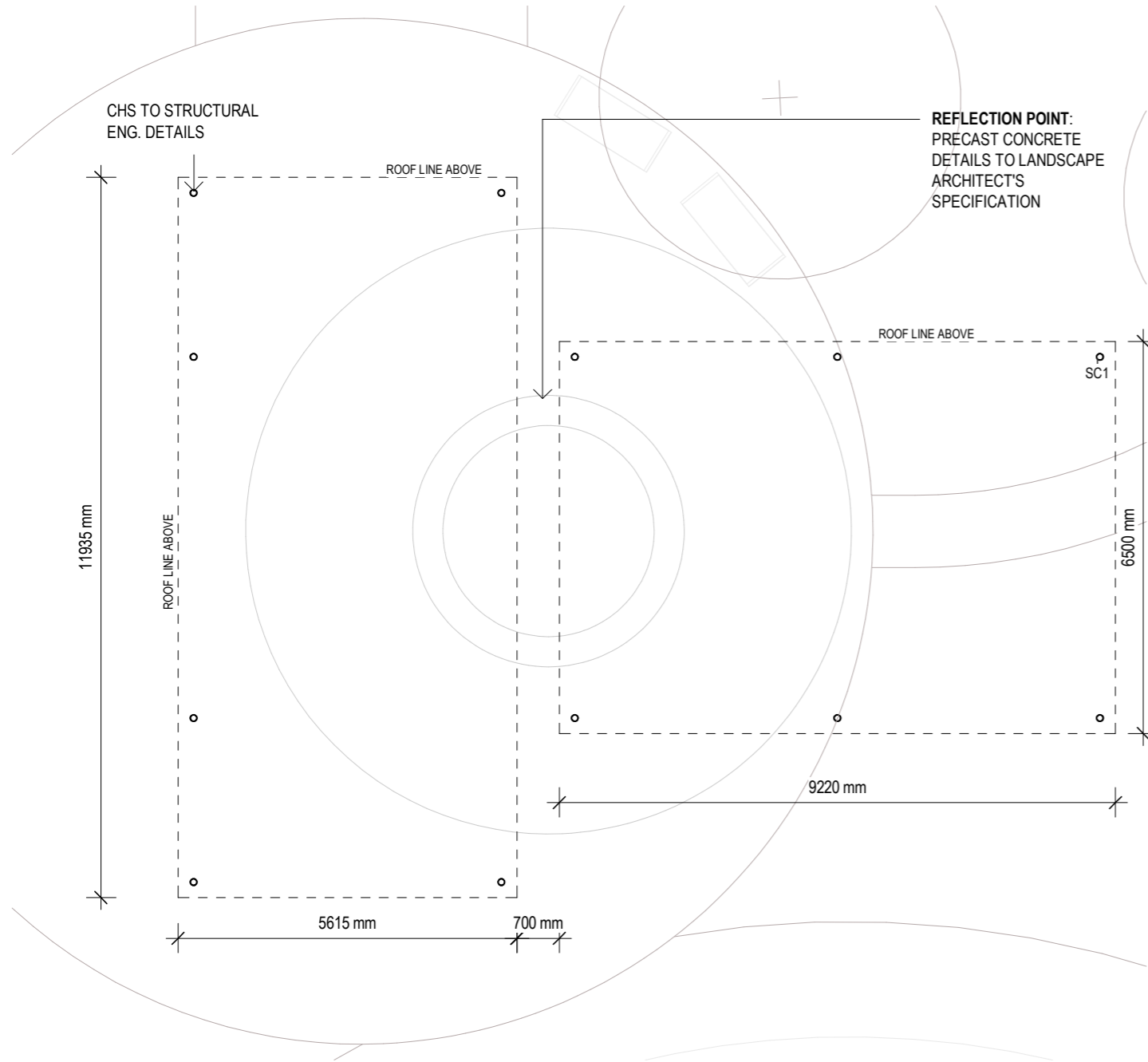
E CANOPY EASTERN ELEVATION
SCALE: 1 : 200



N CANOPY NORTHERN ELEVATION
SCALE: 1 : 200

FINISHES & FIXTURES SCHEDULE LEGEND

RF-4 LASERCUT STEEL SHEETS
 SC1 CIRCULAR HOLLOW SECTION

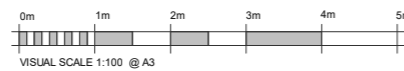


1 **CANOPY FLOOR PLAN**
 SCALE: 1 : 100

2 **CANOPY RCP**
 SCALE: 1 : 100

FOR CONSTRUCTION

DISCLAIMER:
 Copyright in all documents and drawings prepared by KAUNITZ YEUNG ARCHITECTURE any works executed from those documents and drawings shall remain the property of, or on creation vest in KAUNITZ YEUNG ARCHITECTURE Pty Ltd.
 All information illustrated on this document is to be checked and verified, in the event of discrepancies refer to architect prior to commencement of the work.
 Do not scale drawings manually or electronically.



DATE	REV	ISSUE
12.12.2025	A	TENDER
11.02.2026	B	FOR CONSTRUCTION_DRAFT

CHECKED BY:
 KYA_MR
 KYA_MR

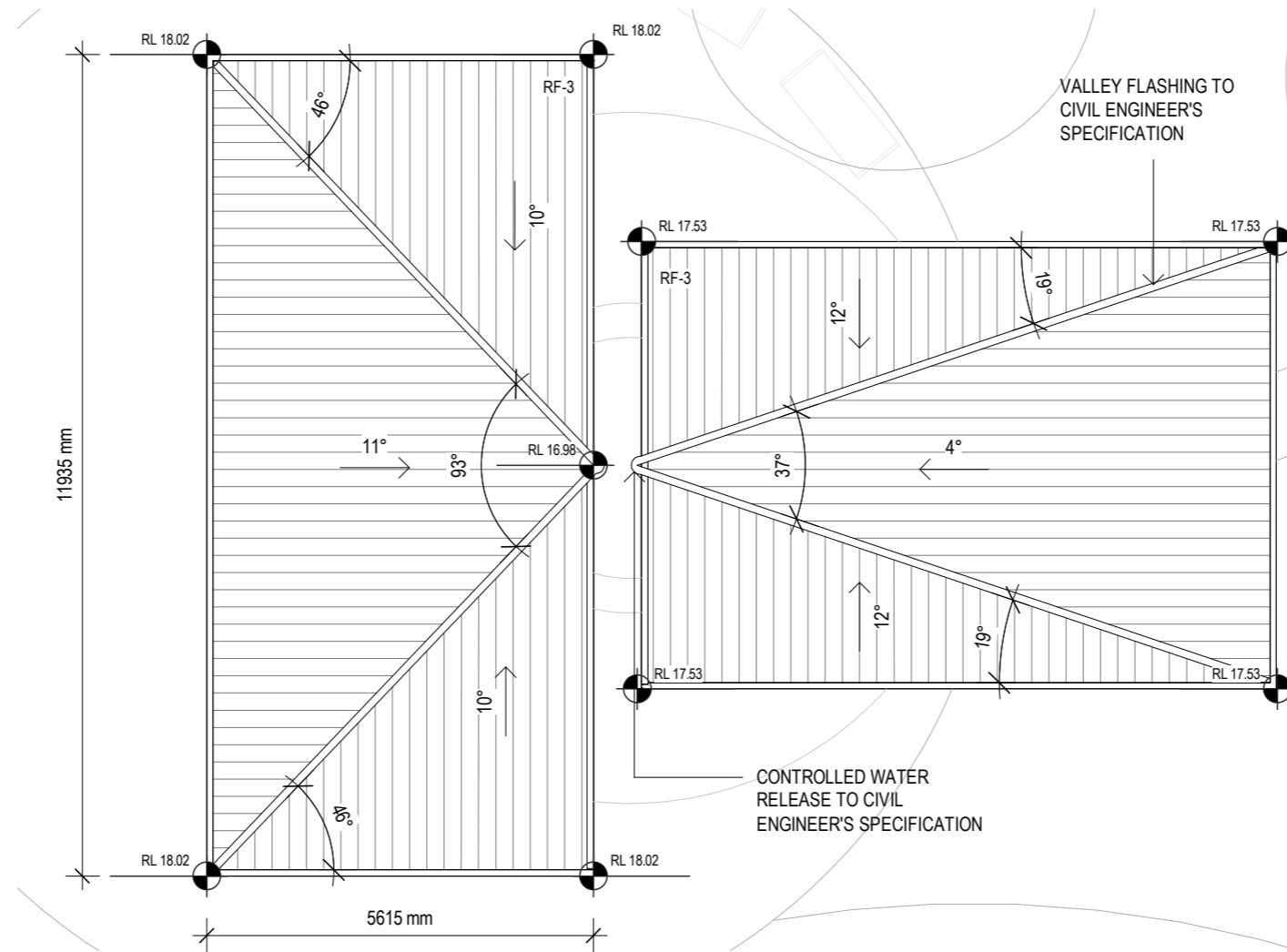
PROJECT :
STOLEN GENERATION KEEPING PLACES - KELLER HOUSE
 1C Fleet St, North Parramatta NSW 2151

KAUNITZ YEUNG ARCHITECTURE
 69 Renwick St., Redfern NSW 2016
 T +61 2 9007 2098

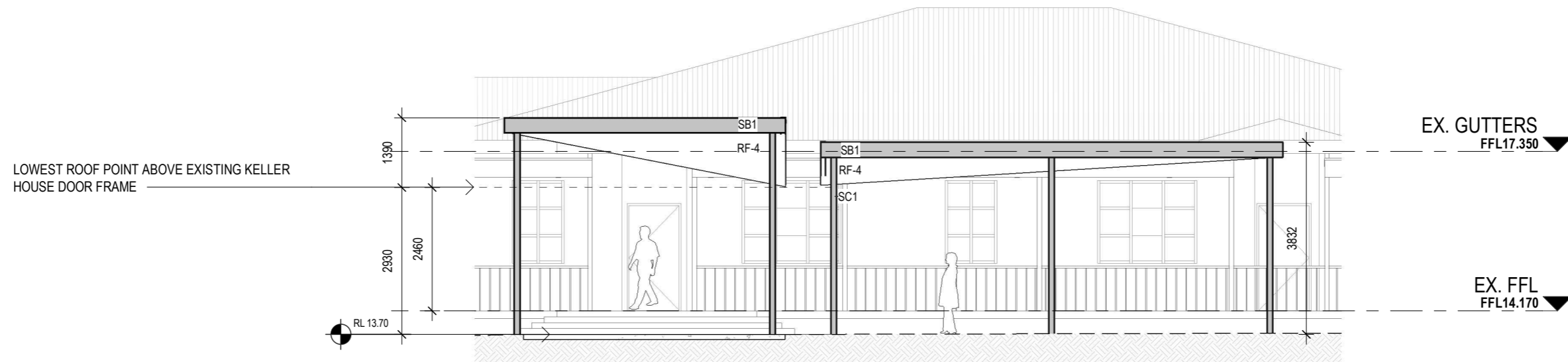
SHEET NO.	REV	TITLE	PHASE	SCALE:	DATE:
A400	B	REFLECTION POINT CANOPY PLANS	TD	1 : 100	11.02.2026

FINISHES & FIXTURES SCHEDULE LEGEND

- RF-3 POLYCARBONATE ROOF CLADDING
- RF-4 LASERCUT STEEL SHEETS
- SB1 STRUCTURAL BEAM
- SC1 CIRCULAR HOLLOW SECTION



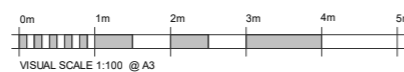
1 CANOPY ROOF PLAN
SCALE: 1 : 100



2 CANOPY EASTERN ELEVATION
SCALE: 1 : 100

FOR CONSTRUCTION

DISCLAIMER:
Copyright in all documents and drawings prepared by KAUNITZ YEUNG ARCHITECTURE any works executed from those documents and drawings shall remain the property of, or on creation vest in KAUNITZ YEUNG ARCHITECTURE Pty Ltd.
All information illustrated on this document is to be checked and verified, in the event of discrepancies refer to architect prior to commencement of the work.
Do not scale drawings manually or electronically.



DATE
12.12.2025
11.02.2026

REV
A
B

ISSUE
TENDER
FOR CONSTRUCTION_DRAFT

CHECKED BY:
KYA_MR
KYA_MR

PROJECT :
STOLEN GENERATION KEEPING PLACES - KELLER HOUSE
1C Fleet St, North Parramatta NSW 2151

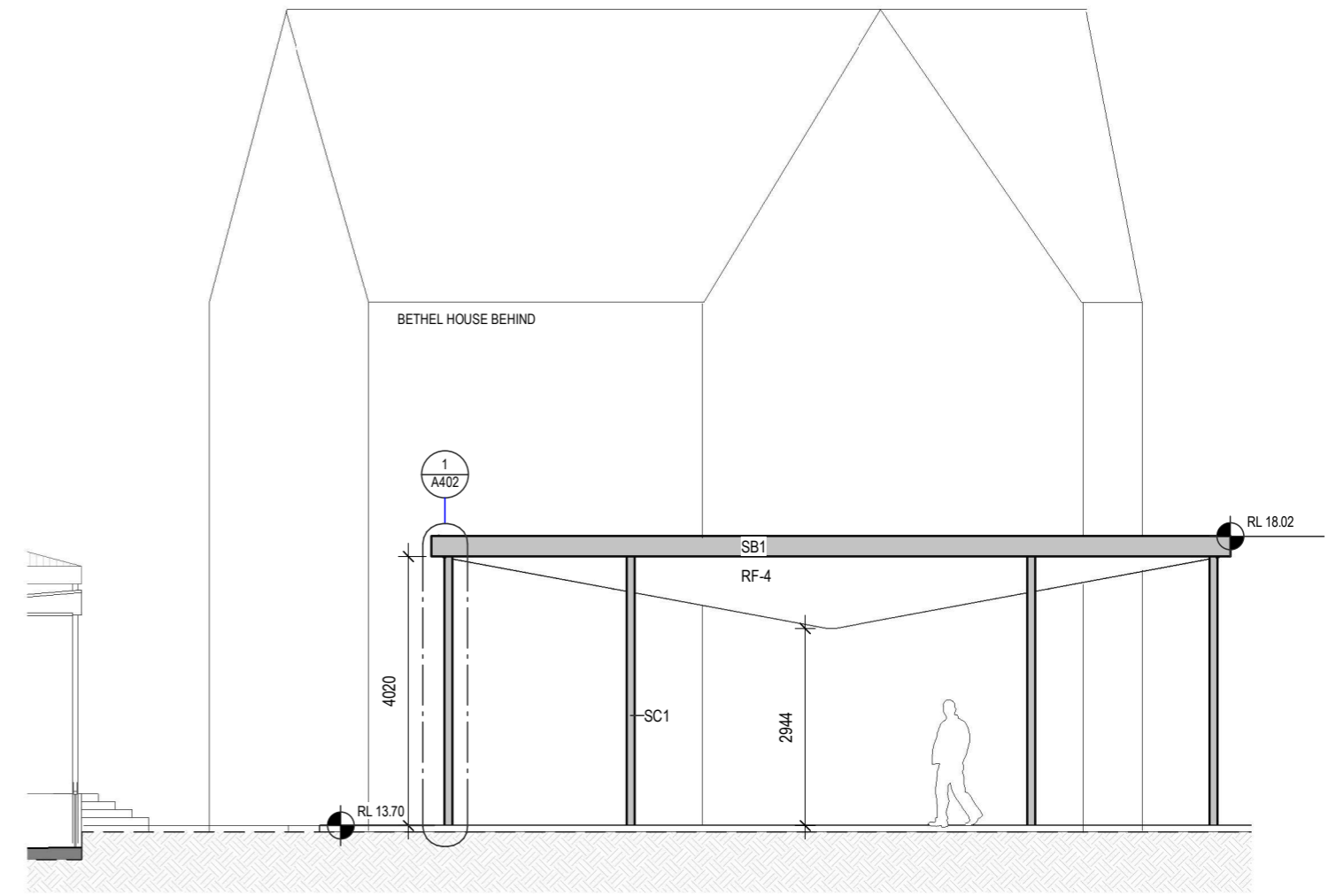
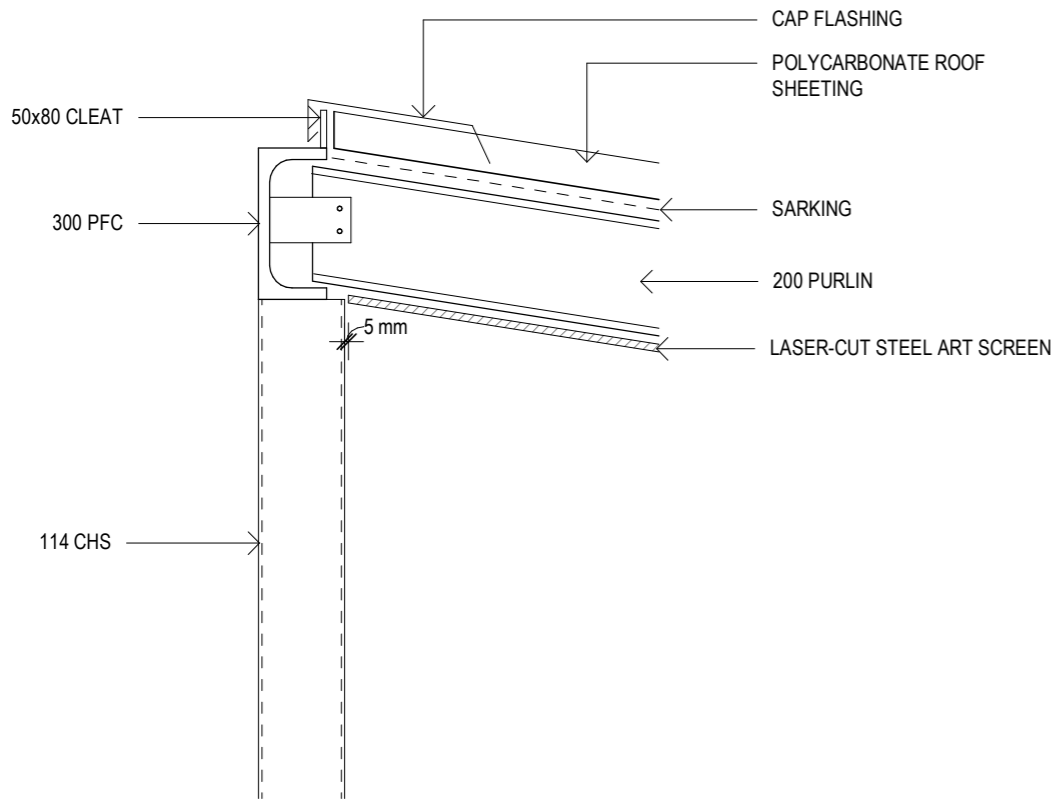
KAUNITZ YEUNG ARCHITECTURE
69 Renwick St., Redfern NSW 2016
T +61 2 9007 2098

SHEET NO. A401
REV B
TITLE REFLECTION POINT CANOPY ROOF PLANS

PHASE TD
SCALE: 1 : 100
DATE: 11.02.2026

FINISHES & FIXTURES SCHEDULE LEGEND

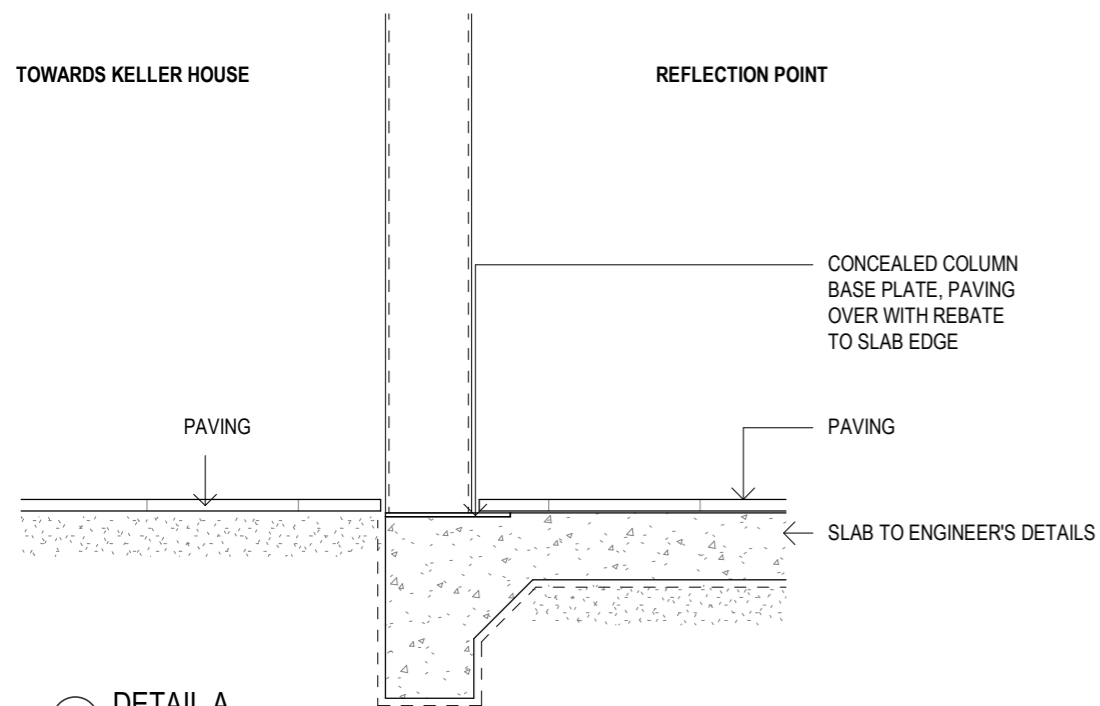
- RF-3 POLYCARBONATE ROOF CLADDING
- RF-4 LASERCUT STEEL SHEETS
- SB1 STRUCTURAL BEAM
- SC1 CIRCULAR HOLLOW SECTION



3 CANOPY SOUTHERN ELEVATION
SCALE: 1 : 100

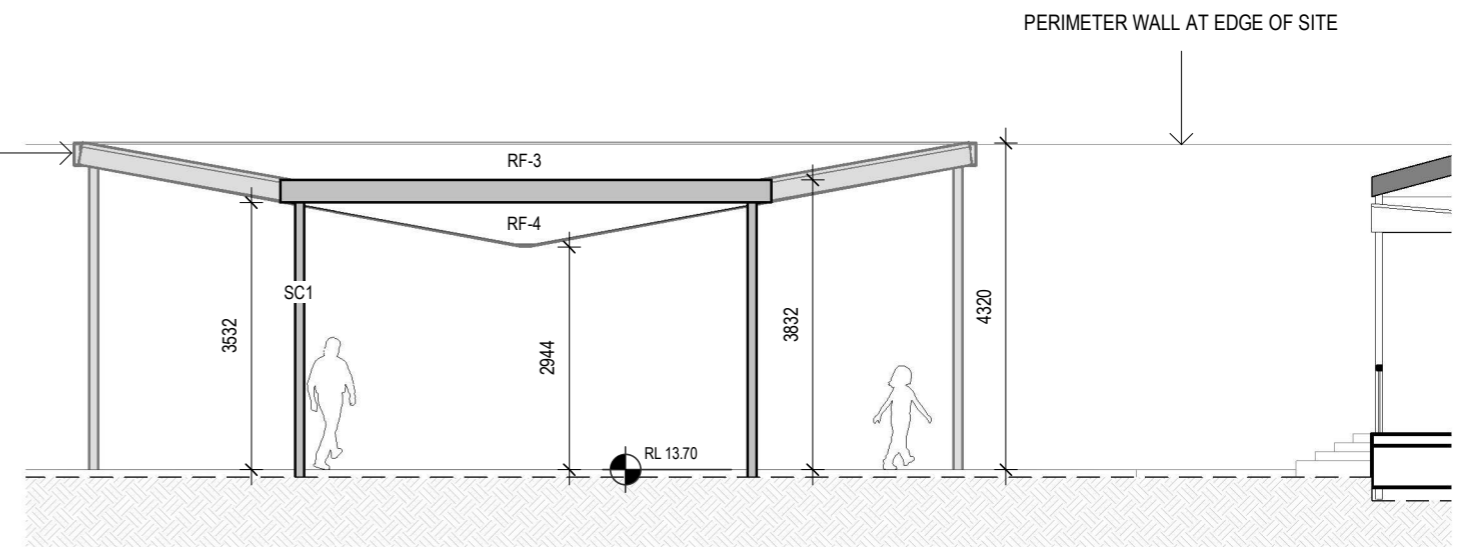
TOWARDS KELLER HOUSE

REFLECTION POINT



1 DETAIL A
SCALE: 1 : 10

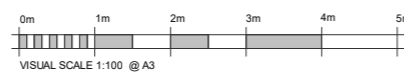
BUILD UP TO STRUCTURAL
ENG. DETAILS



2 CANOPY NORTHERN ELEVATION
SCALE: 1 : 100

FOR CONSTRUCTION

DISCLAIMER:
Copyright in all documents and drawings prepared by
KAUNITZ YEUNG ARCHITECTURE any works
executed from those documents and drawings shall
remain the property of, or on creation vest in KAUNITZ
YEUNG ARCHITECTURE Pty Ltd.
All information illustrated on this document is to be
checked and verified, in the event of discrepancies
refer to architect prior to commencement of the work.
Do not scale drawings manually or electronically.



DATE
12.12.2025
11.02.2026

REV
A
B

ISSUE
TENDER
FOR CONSTRUCTION_DRAFT

CHECKED BY:
KYA_MR
KYA_MR

PROJECT :
STOLEN GENERATION KEEPING PLACES - KELLER HOUSE
1C Fleet St, North Parramatta NSW 2151

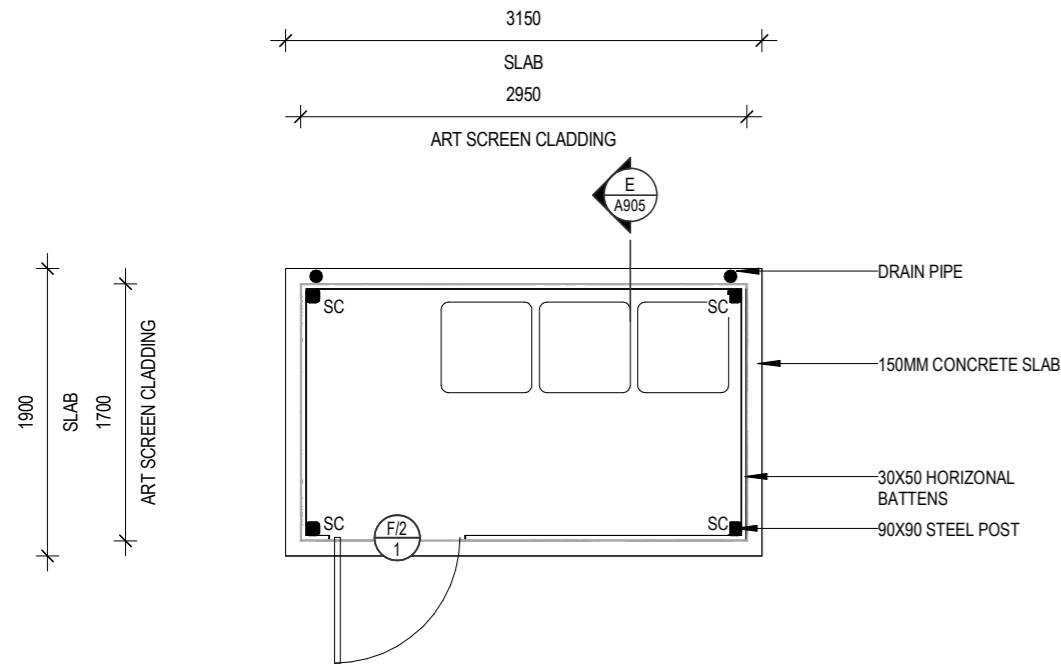
KAUNITZ YEUNG ARCHITECTURE
69 Renwick St., Redfern NSW 2016
T +61 2 9007 2098

SHEET NO. A402
REV B
TITLE REFLECTION POINT CANOPY ELEVATIONS

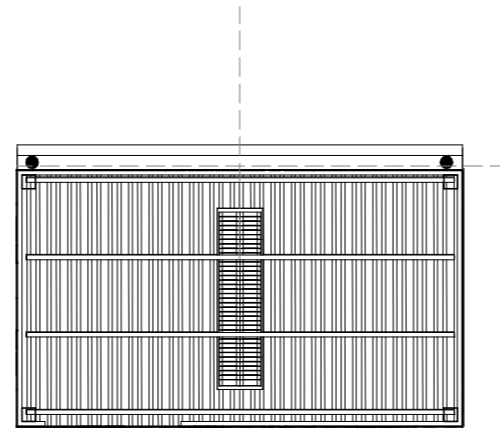
PHASE TD As indicated
SCALE:
DATE: 11.02.2026

IMPORTANT NOTES:

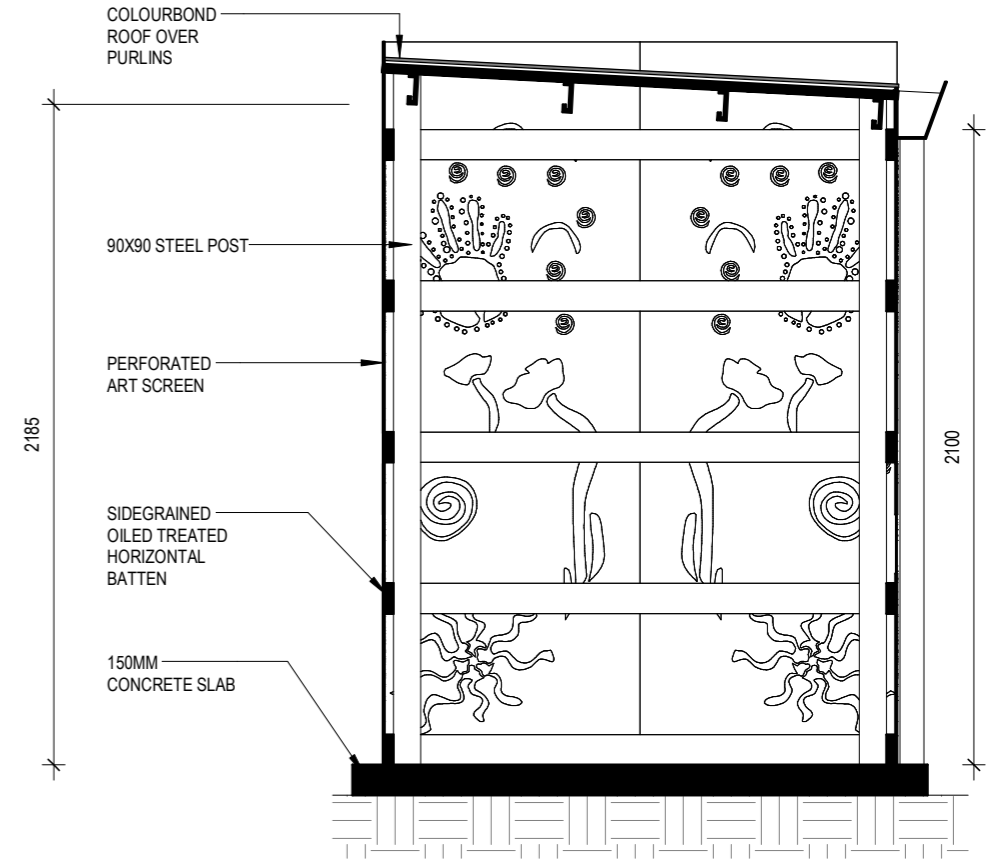
ART SHOWN IN PERFORATED ART SCREEN ARE AN EXAMPLE ONLY - ACTUAL ART TBC DURING CONSTRUCTION PHASE



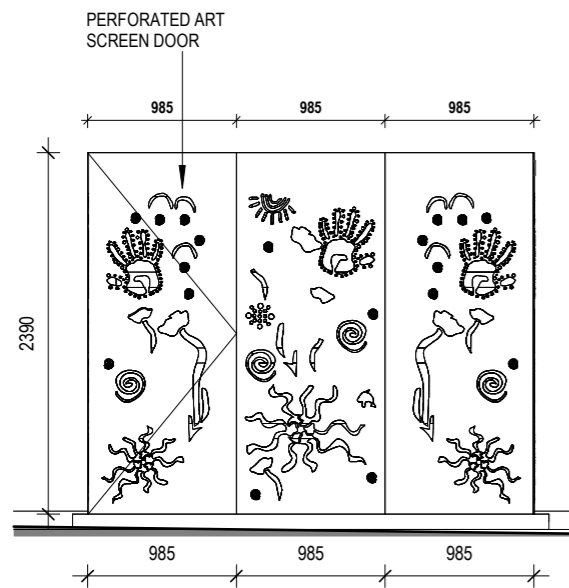
1 BIN ENCLOSURE DETAIL PLAN
SCALE: 1 : 50



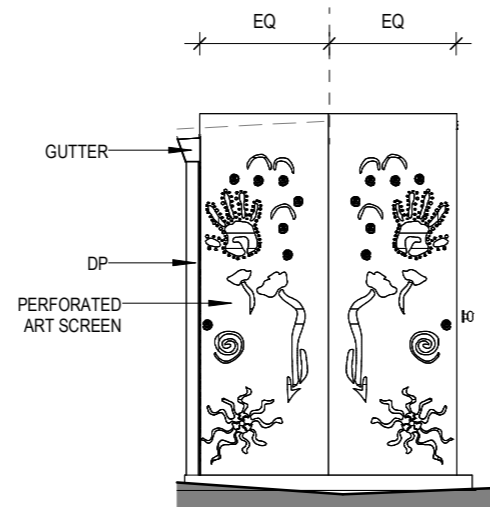
2 BIN ENCLOSURE DETAIL - RCP
SCALE: 1 : 50



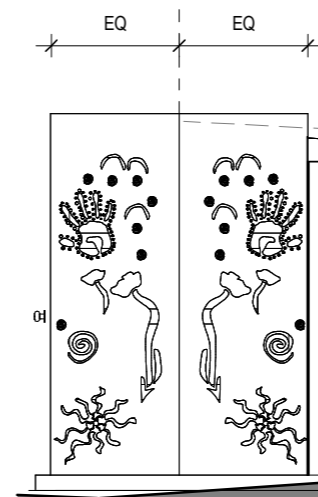
E BIN ENCLOSURE DETAIL - SECTION
SCALE: 1 : 25



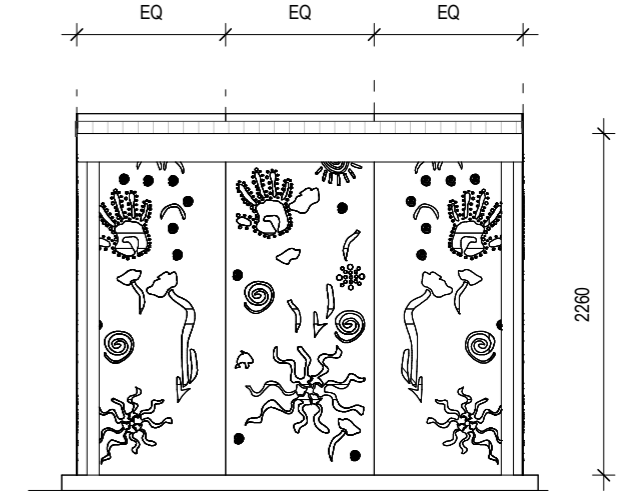
A BIN ENCLOSURE DETAIL - ELEVATION A
SCALE: 1 : 50



B BIN ENCLOSURE DETAIL - ELEVATION B
SCALE: 1 : 50



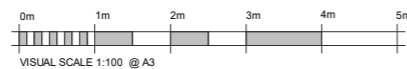
C BIN ENCLOSURE DETAIL - ELEVATION C
SCALE: 1 : 50



D BIN ENCLOSURE DETAIL - ELEVATION D
SCALE: 1 : 50

FOR CONSTRUCTION

DISCLAIMER:
Copyright in all documents and drawings prepared by KAUNITZ YEUNG ARCHITECTURE any works executed from those documents and drawings shall remain the property of, or on creation vest in KAUNITZ YEUNG ARCHITECTURE Pty Ltd.
All information illustrated on this document is to be checked and verified, in the event of discrepancies refer to architect prior to commencement of the work.
Do not scale drawings manually or electronically.



DATE
12.12.2025
11.02.2026

REV
A TENDER
B FOR CONSTRUCTION_DRAFT

CHECKED BY:
KYA_MR
KYA_MR

PROJECT :
STOLEN GENERATION KEEPING PLACES - KELLER HOUSE
1C Fleet St, North Parramatta NSW 2151

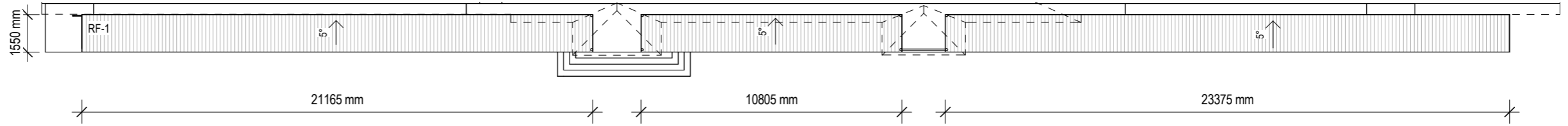
KAUNITZ YEUNG ARCHITECTURE
69 Renwick St., Redfern NSW 2016
T +61 2 9007 2098

SHEET NO. A905
REV B
TITLE BIN ENCLOSURE

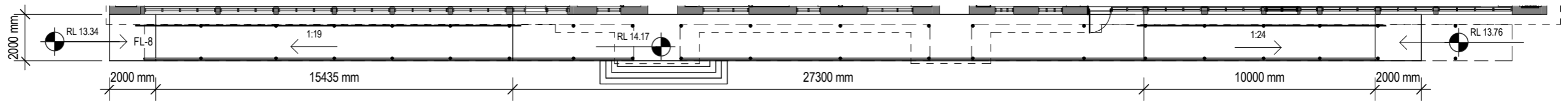
PHASE TD As indicated
SCALE: As indicated
DATE: 11.02.2026

FINISHES & FIXTURES SCHEDULE LEGEND

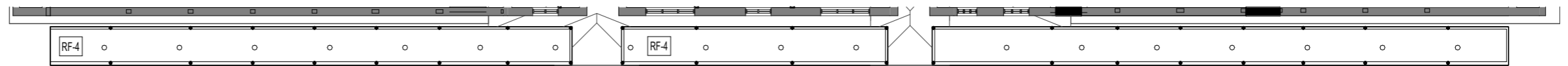
- FL-8 BRUSHED CONCRETE PATHWAY
- RF-1 COLORBOND CLADDING
- RF-4 LASERCUT STEEL SHEETS



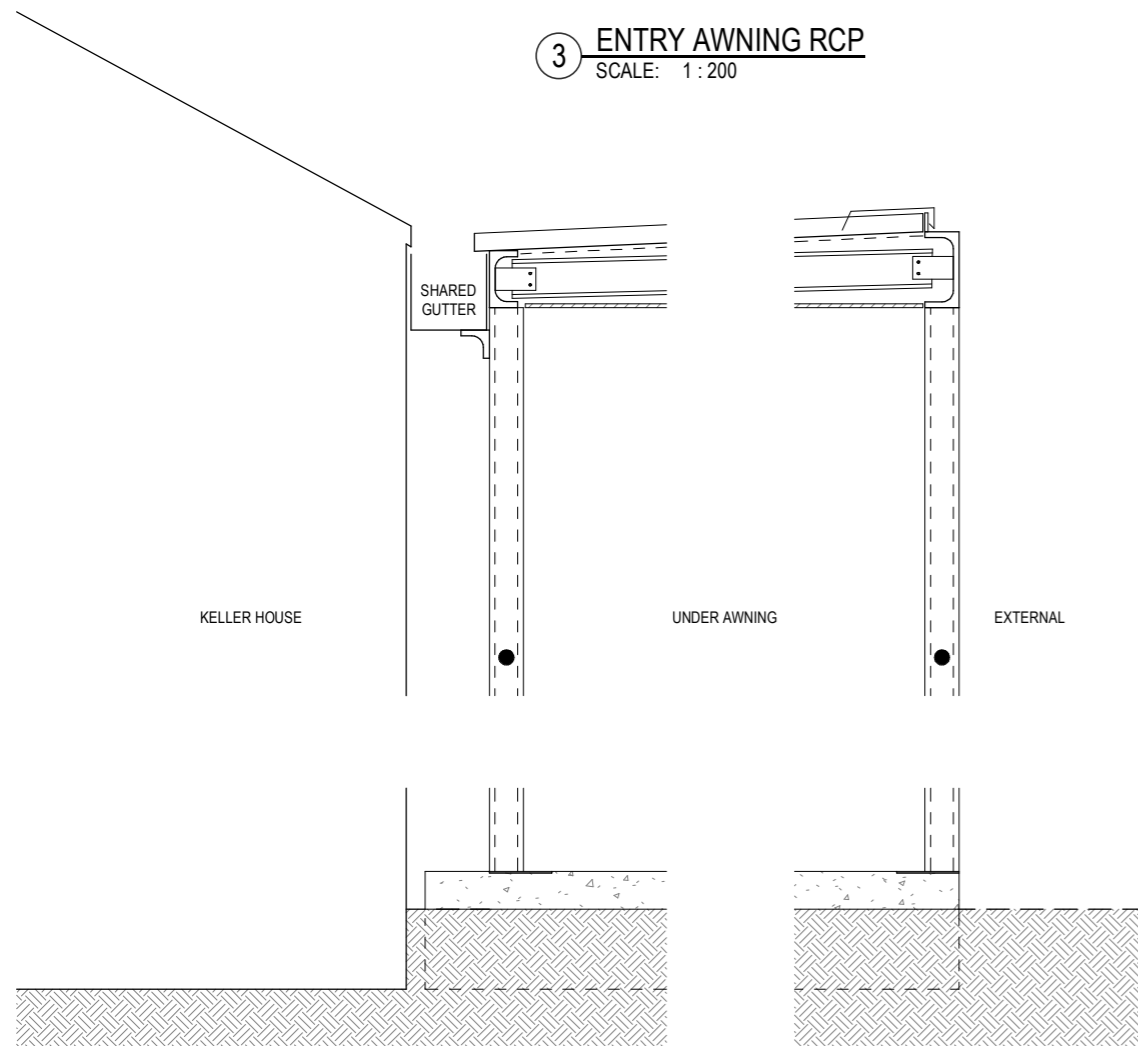
1 ENTRY RAMP ROOF PLAN
SCALE: 1 : 200



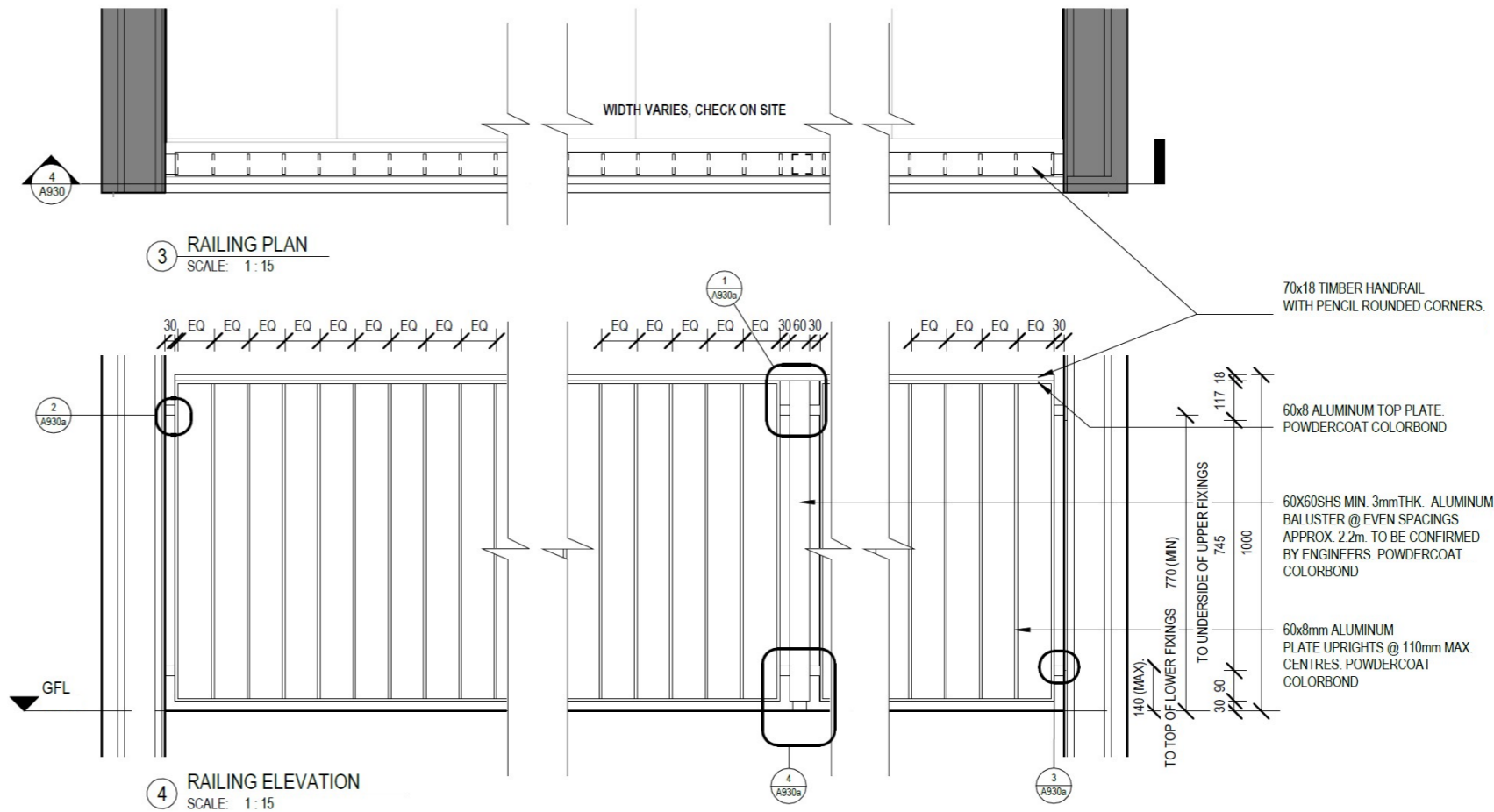
2 ENTRY RAMP OVERALL PLAN
SCALE: 1 : 200



3 ENTRY AWNING RCP
SCALE: 1 : 200



A PROPOSED ENTRY DETAIL A
SCALE: 1 : 20



3 RAILING PLAN
SCALE: 1 : 15

4 RAILING ELEVATION
SCALE: 1 : 15

DISCLAIMER:
Copyright in all documents and drawings prepared by KAUNITZ YEUNG ARCHITECTURE any works executed from those documents and drawings shall remain the property of, or on creation vest in KAUNITZ YEUNG ARCHITECTURE Pty Ltd.
All information illustrated on this document is to be checked and verified, in the event of discrepancies refer to architect prior to commencement of the work.
Do not scale drawings manually or electronically.



DATE
12.12.2025
11.02.2026

REV
A
B

ISSUE
TENDER
FOR CONSTRUCTION_DRAFT

CHECKED BY:
KYA_MR
KYA_MR

PROJECT :
STOLEN GENERATION KEEPING PLACES - KELLER HOUSE
1C Fleet St, North Parramatta NSW 2151

KAUNITZ YEUNG ARCHITECTURE
69 Renwick St., Redfern NSW 2016
T +61 2 9007 2098

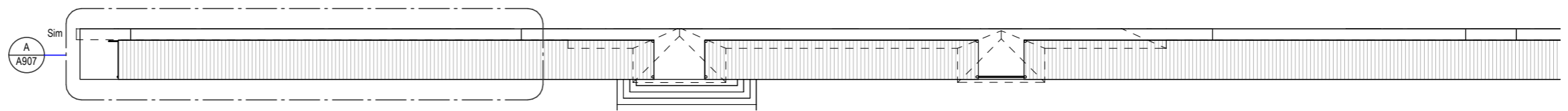
SHEET NO. A906
REV B
TITLE ENTRY RAMP AND AWNING

PHASE TD As indicated
SCALE:
DATE: 11.02.2026

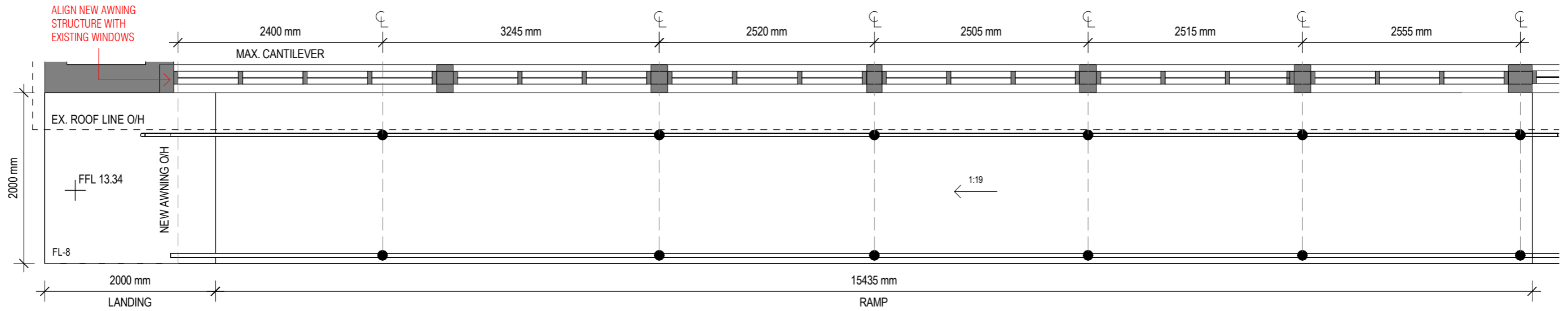
FOR CONSTRUCTION

FINISHES & FIXTURES SCHEDULE LEGEND

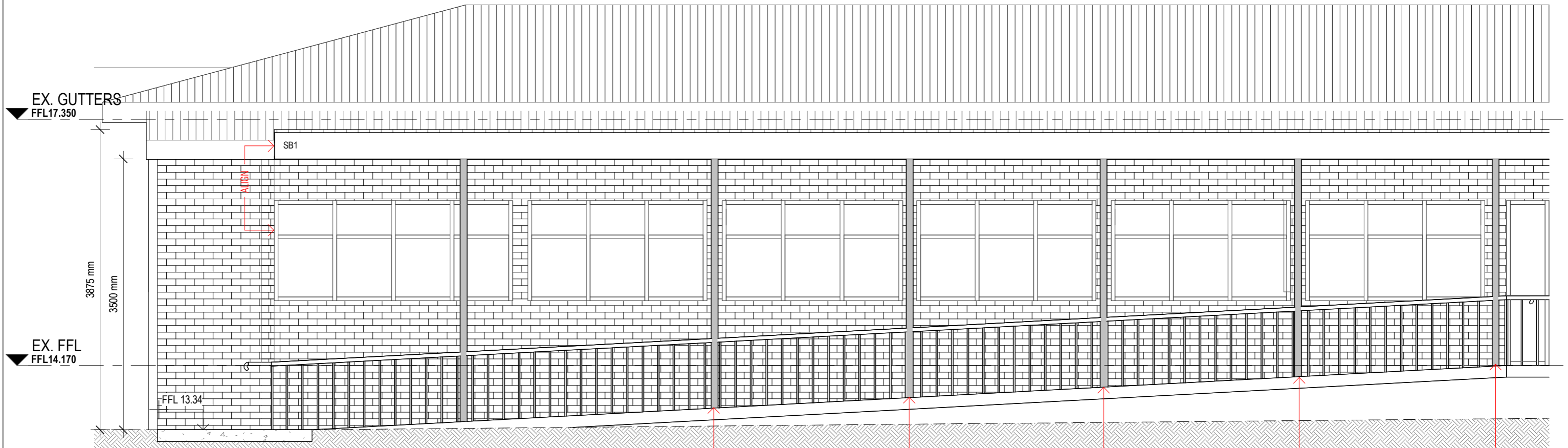
FL-8 BRUSHED CONCRETE PATHWAY
 SB1 STRUCTURAL BEAM



1 **ENTRY RAMP LOCATION PLAN A**
 SCALE: 1 : 200



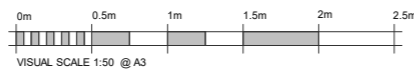
A **ENTRY RAMP PLAN A**
 SCALE: 1 : 50



2 **ENTRY RAMP ELEVATION A**
 SCALE: 1 : 50

FOR CONSTRUCTION

DISCLAIMER:
 Copyright in all documents and drawings prepared by KAUNITZ YEUNG ARCHITECTURE any works executed from those documents and drawings shall remain the property of, or on creation vest in KAUNITZ YEUNG ARCHITECTURE Pty Ltd.
 All information illustrated on this document is to be checked and verified, in the event of discrepancies refer to architect prior to commencement of the work.
 Do not scale drawings manually or electronically.



DATE
 12.12.2025
 11.02.2026

REV
 A TENDER
 B FOR CONSTRUCTION_DRAFT

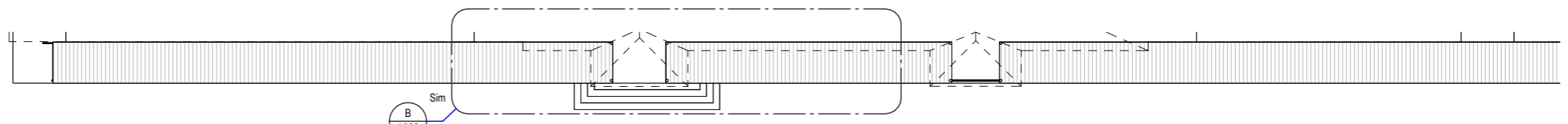
CHECKED BY:
 KYA_MR
 KYA_MR

PROJECT :
 STOLEN GENERATION KEEPING PLACES - KELLER HOUSE
 1C Fleet St, North Parramatta NSW 2151

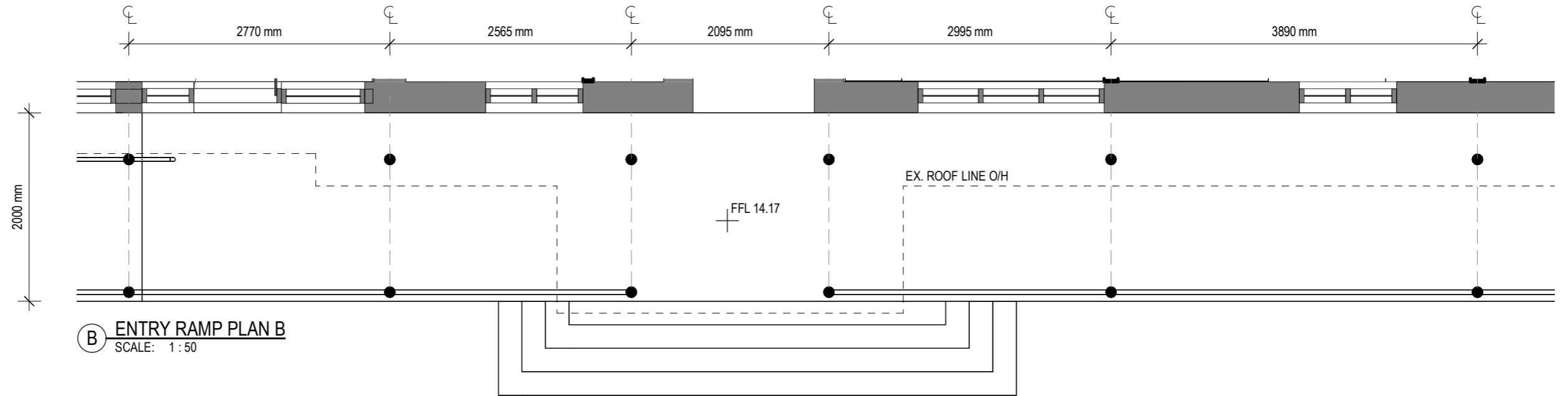
KAUNITZ YEUNG ARCHITECTURE
 69 Renwick St., Redfern NSW 2016
 T +61 2 9007 2098

SHEET NO. A907
REV B
TITLE ENTRY RAMP AND AWNING A

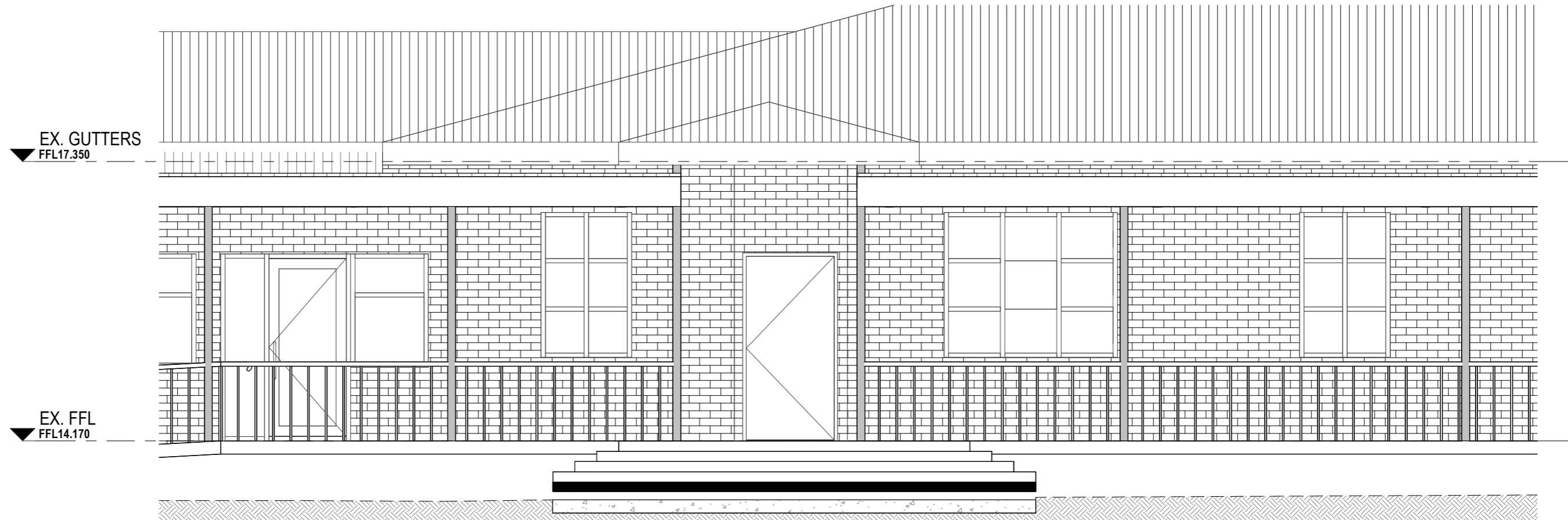
PHASE TD As indicated
SCALE:
DATE: 11.02.2026



1 ENTRY RAMP LOCATION PLAN B
SCALE: 1 : 200



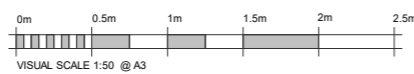
B ENTRY RAMP PLAN B
SCALE: 1 : 50



2 ENTRY RAMP ELEVATION B
SCALE: 1 : 50

FOR CONSTRUCTION

DISCLAIMER:
Copyright in all documents and drawings prepared by KAUNITZ YEUNG ARCHITECTURE any works executed from those documents and drawings shall remain the property of, or on creation vest in KAUNITZ YEUNG ARCHITECTURE Pty Ltd.
All information illustrated on this document is to be checked and verified, in the event of discrepancies refer to architect prior to commencement of the work.
Do not scale drawings manually or electronically.



DATE
12.12.2025
11.02.2026

REV
A TENDER
B FOR CONSTRUCTION_DRAFT

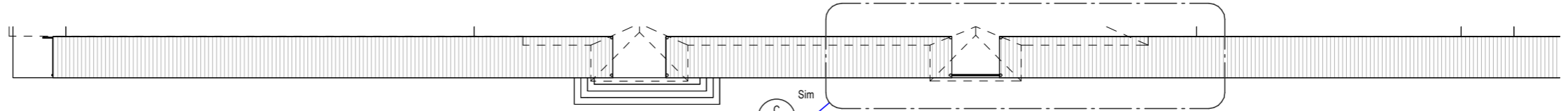
CHECKED BY:
KYA_MR
KYA_MR

PROJECT :
STOLEN GENERATION KEEPING PLACES - KELLER HOUSE
1C Fleet St, North Parramatta NSW 2151

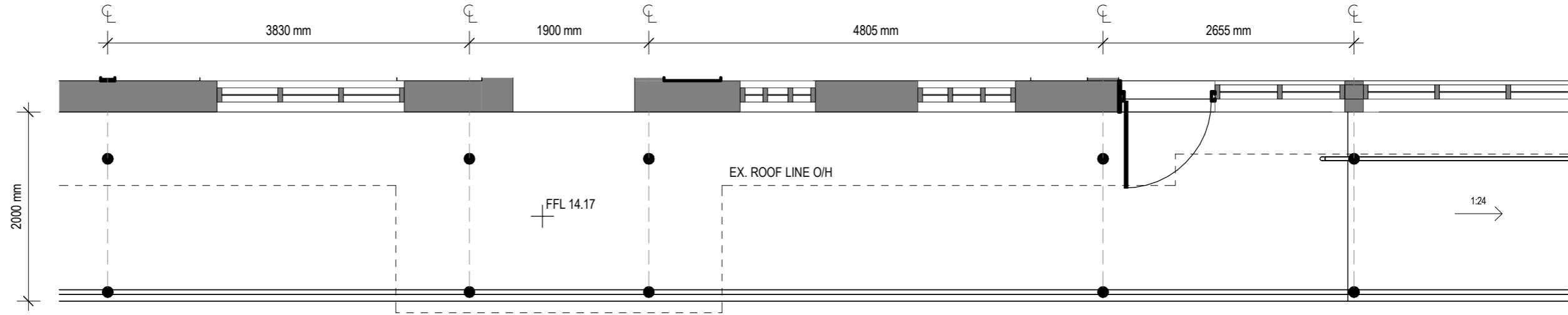
KAUNITZ YEUNG ARCHITECTURE
69 Renwick St., Redfern NSW 2016
T +61 2 9007 2098

SHEET NO. REV TITLE
A908 B ENTRY RAMP AND AWNING B

PHASE SCALE: DATE:
TD As indicated 11.02.2026



1 ENTRY RAMP LOCATION PLAN C
SCALE: 1 : 200



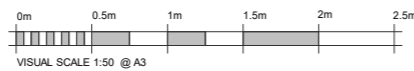
C ENTRY RAMP PLAN C
SCALE: 1 : 50



2 ENTRY RAMP ELEVATION C
SCALE: 1 : 50

FOR CONSTRUCTION

DISCLAIMER:
Copyright in all documents and drawings prepared by KAUNITZ YEUNG ARCHITECTURE any works executed from those documents and drawings shall remain the property of, or on creation vest in KAUNITZ YEUNG ARCHITECTURE Pty Ltd.
All information illustrated on this document is to be checked and verified, in the event of discrepancies refer to architect prior to commencement of the work.
Do not scale drawings manually or electronically.



DATE
12.12.2025
11.02.2026

REV
A TENDER
B FOR CONSTRUCTION_DRAFT

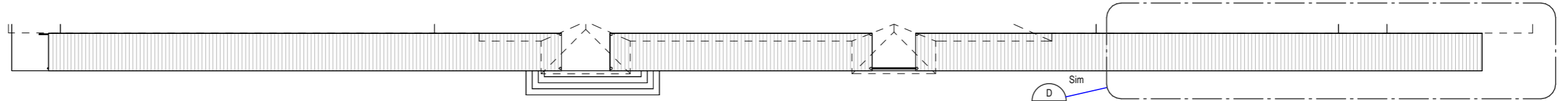
CHECKED BY:
KYA_MR
KYA_MR

PROJECT :
STOLEN GENERATION KEEPING PLACES - KELLER HOUSE
1C Fleet St, North Parramatta NSW 2151

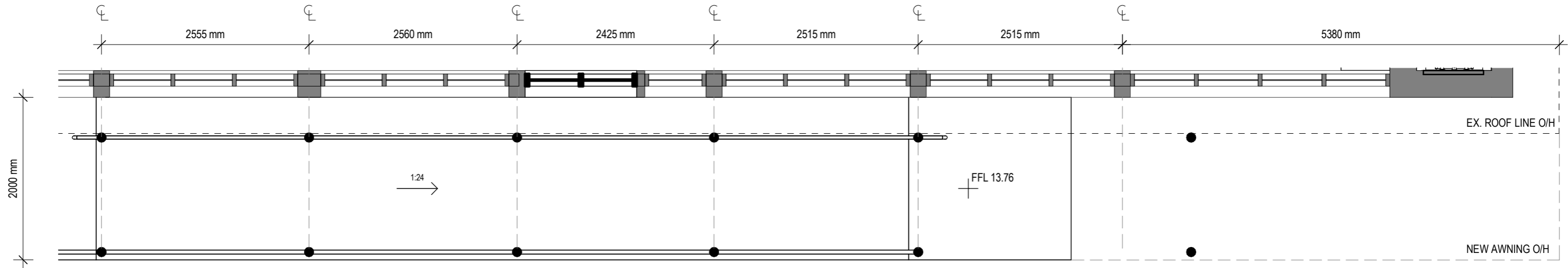
KAUNITZ YEUNG ARCHITECTURE
69 Renwick St., Redfern NSW 2016
T +61 2 9007 2098

SHEET NO. A909
REV B
TITLE ENTRY RAMP AND AWNING C

PHASE TD As indicated
SCALE: As indicated
DATE: 11.02.2026



1 ENTRY RAMP LOCATION PLAN D
SCALE: 1:200



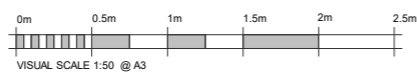
D ENTRY RAMP PLAN D
SCALE: 1:50



2 ENTRY RAMP ELEVATION D
SCALE: 1:50

FOR CONSTRUCTION

DISCLAIMER:
Copyright in all documents and drawings prepared by KAUNITZ YEUNG ARCHITECTURE any works executed from those documents and drawings shall remain the property of, or on creation vest in KAUNITZ YEUNG ARCHITECTURE Pty Ltd.
All information illustrated on this document is to be checked and verified, in the event of discrepancies refer to architect prior to commencement of the work.
Do not scale drawings manually or electronically.



DATE
12.12.2025
11.02.2026

REV
A TENDER
B FOR CONSTRUCTION_DRAFT

CHECKED BY:
KYA_MR
KYA_MR

PROJECT :
STOLEN GENERATION KEEPING PLACES - KELLER HOUSE
1C Fleet St, North Parramatta NSW 2151

KAUNITZ YEUNG ARCHITECTURE
69 Renwick St., Redfern NSW 2016
T +61 2 9007 2098

SHEET NO. A910
REV B
TITLE ENTRY RAMP AND AWNING D

PHASE TD As indicated
SCALE: 11.02.2026
DATE: